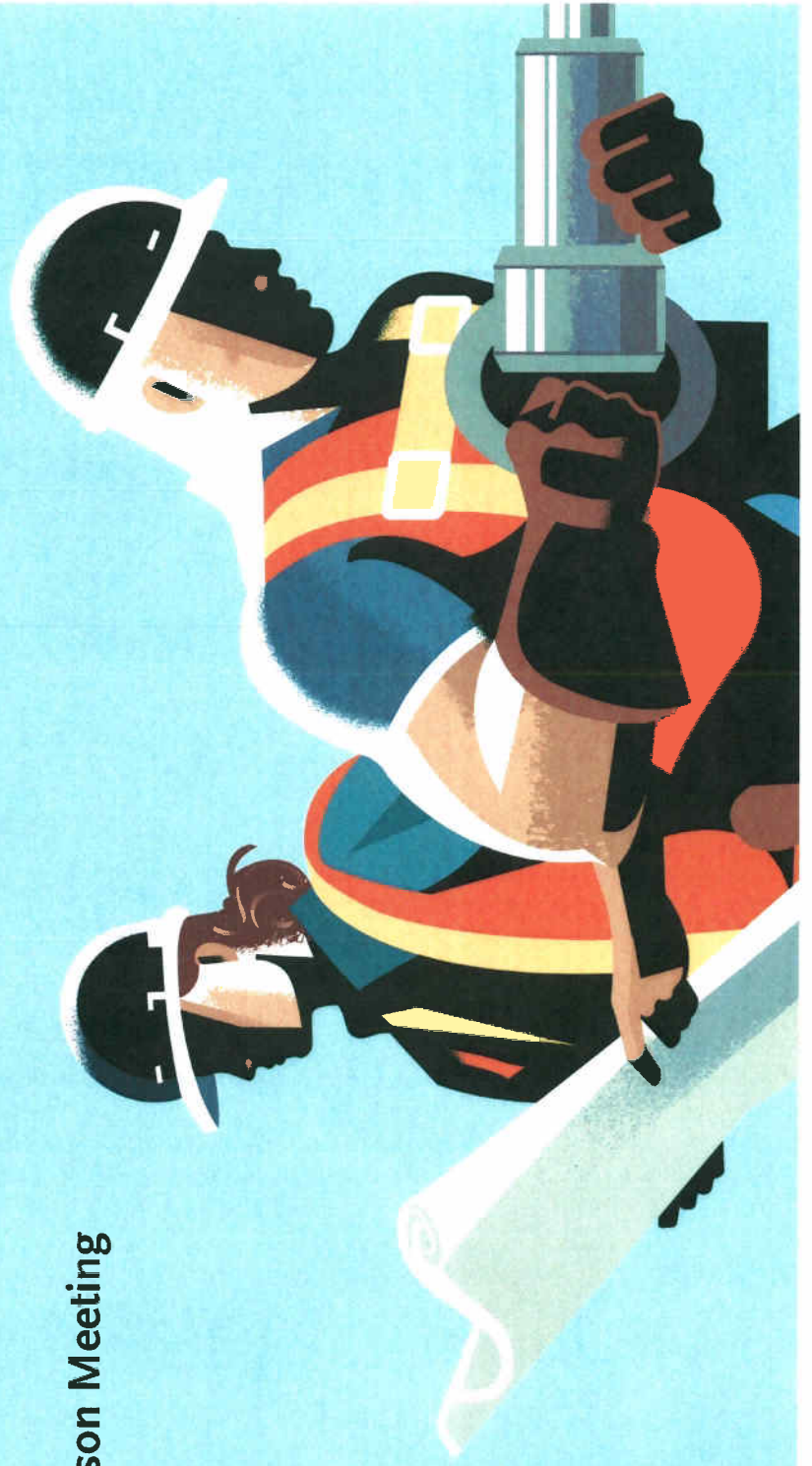
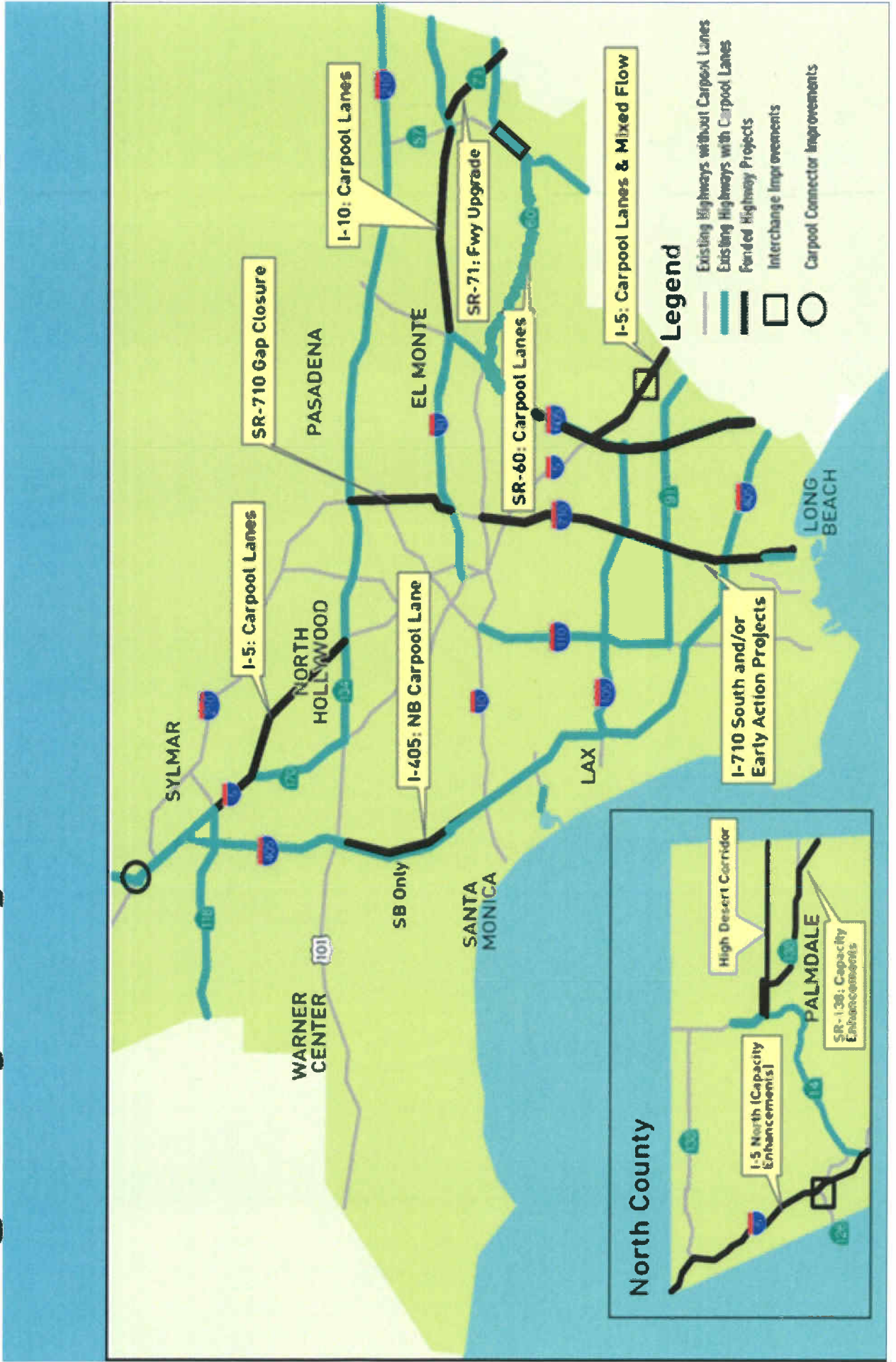


Douglas R. Failing, P.E.
Executive Director, Highway Program

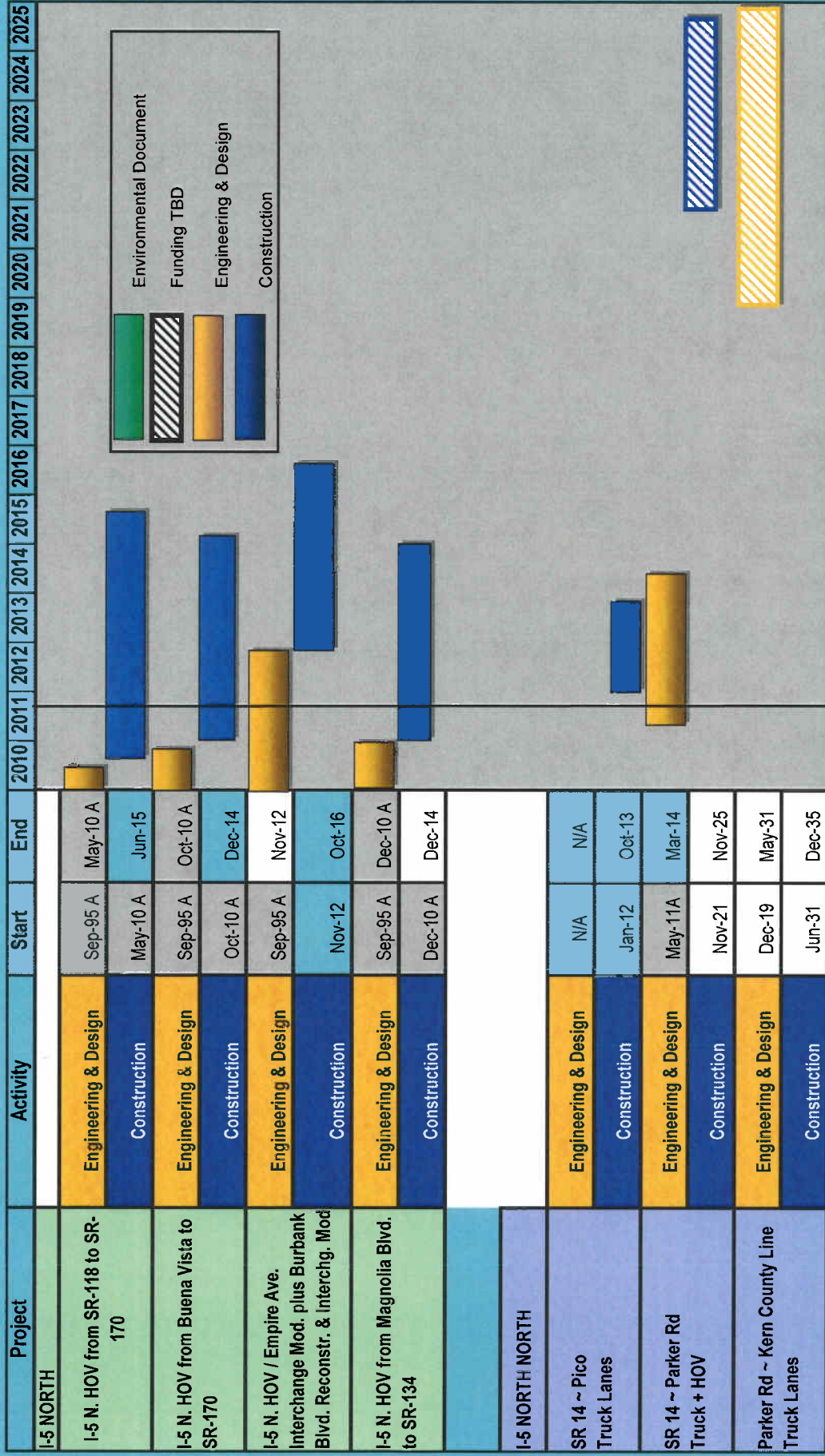
ACEC/Metro Liaison Meeting
October 21, 2011



Highway Projects



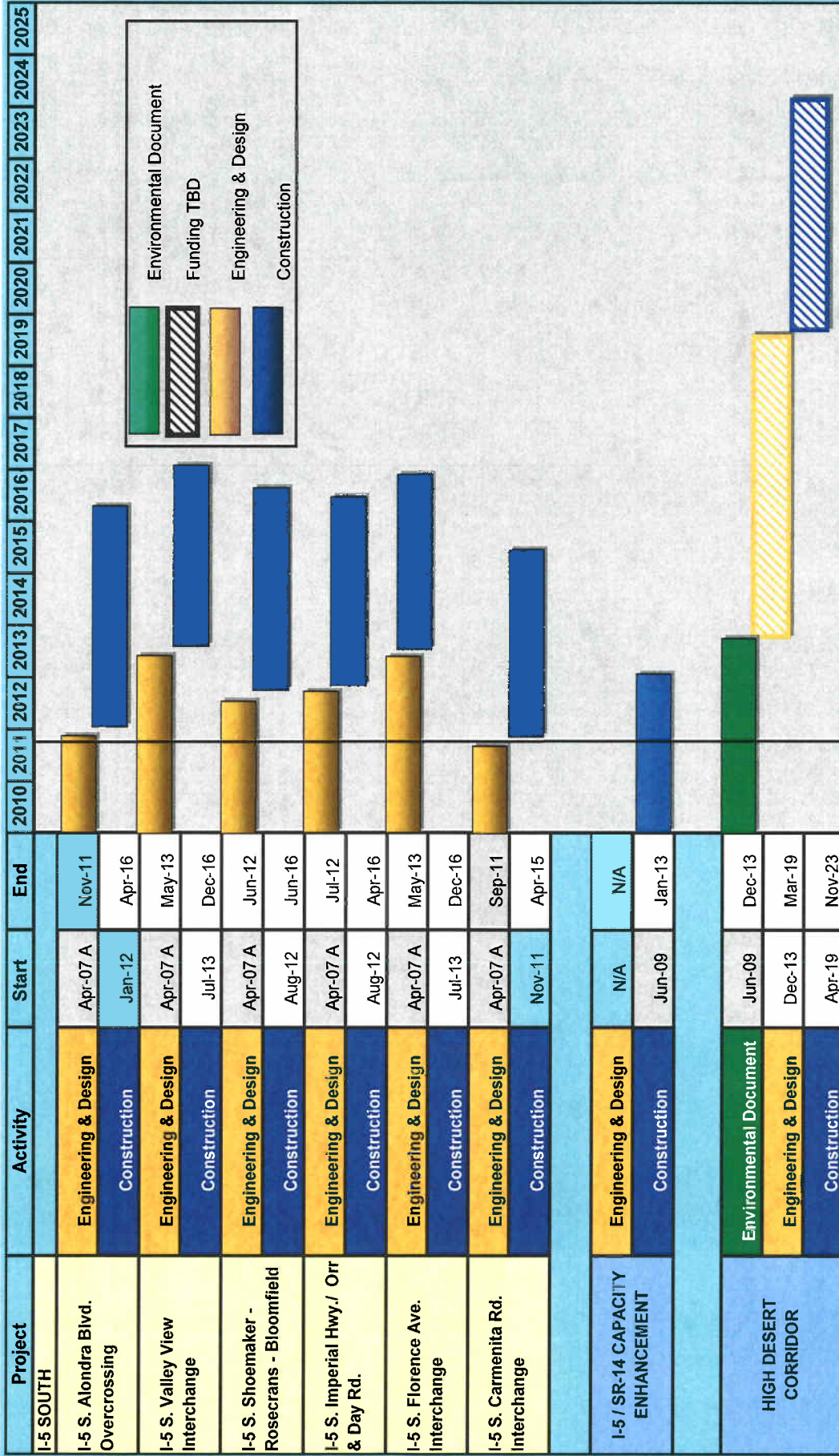
Highway Program Project Schedules



Assumptions: ENVIRONMENTAL DOCUMENT includes: Planning
 ENGINEERING & DESIGN includes: Engineering Final Design -ROW-Procurement for Construction
 CONSTRUCTION includes: Construction w/o Closeout



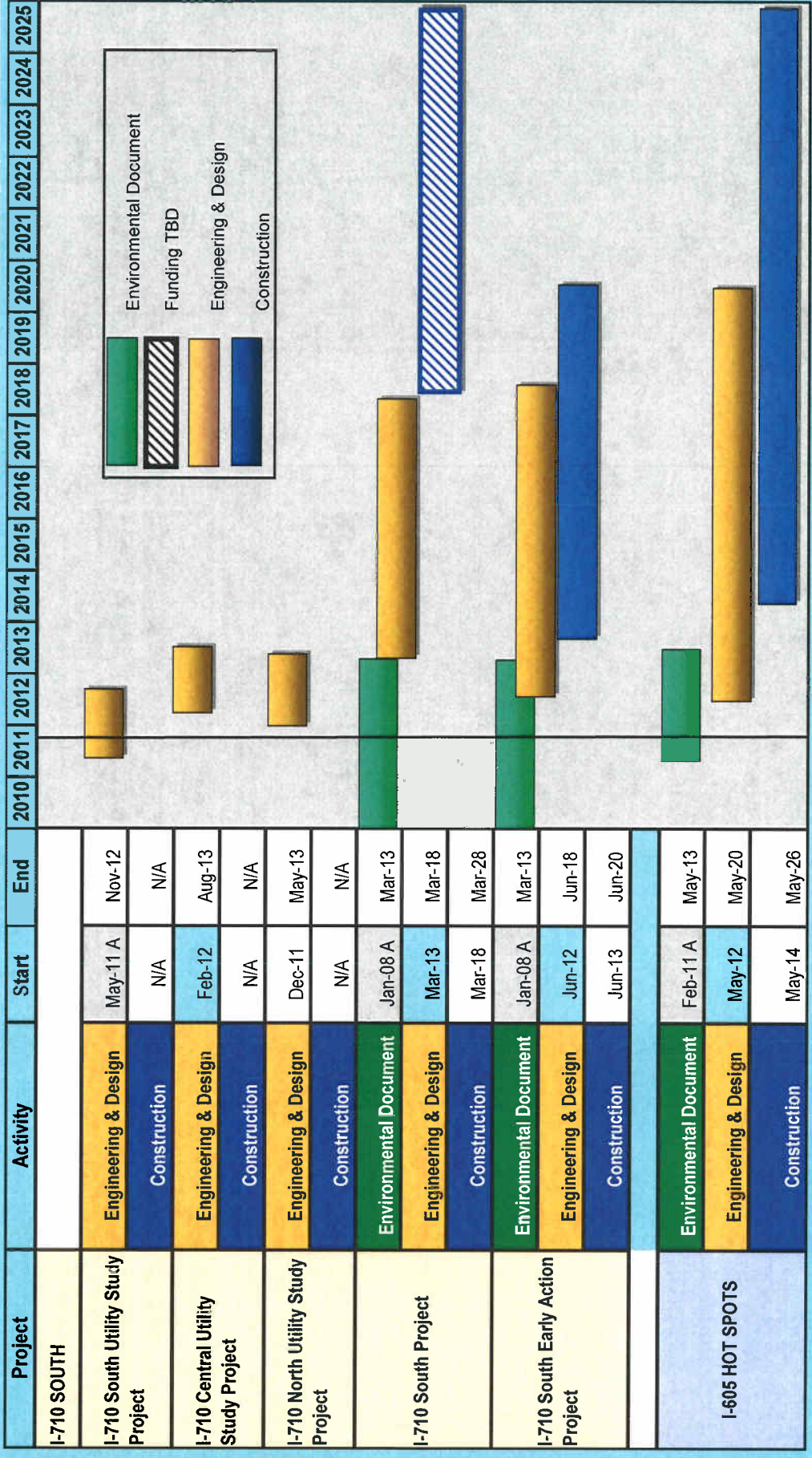
Highway Program Project Schedules



Assumptions: ENVIRONMENTAL DOCUMENT includes: Planning
 ENGINEERING & DESIGN includes: Engineering Final Design -ROW-Procurement for Construction
 CONSTRUCTION includes: Construction w/o Closeout



Highway Program Project Schedules



Assumptions: ENVIRONMENTAL DOCUMENT includes: Planning
 ENGINEERING & DESIGN includes: Engineering Final Design -ROW-Procurement for Construction
 CONSTRUCTION includes: Construction w/o Closeout



