

Asset Management

Caltrans D7/ ACEC
Professional Liaison Committee Meeting
Roger C. Yoh
District 7 Asset Manager
September 16th, 2019



District 7 (Los Angeles and Ventura Counties)

Transportation Asset Management



Transportation Asset Management (TAM) is a strategic and systematic process of operating, maintaining, upgrading, and expanding physical assets effectively throughout their life cycle. It focuses on business and engineering practices for resource allocation and utilization, with the objective of better decision making based on quality information and well-defined objectives.

Statutory Requirements

- **MAP-21 and FAST Acts** – each state is required to develop a risk-based asset management plan to address its pavement and bridges for the National Highway System
- **SB 486** - implement a robust asset management plan by 2020
- **SB 1** - defines the performance measures
- **AB 515** - State Highway System Management Plan, quantifiable accomplishments, goals, objectives, costs, and performance measures consistent with the asset management plan



Significance of SHSMP



SHSMP

FINAL

2017

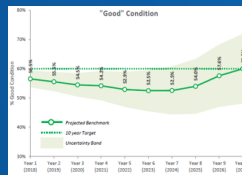
State Highway System Management Plan



TAMP



Delivery/M&O: Pipeline Projects
Execute Performance



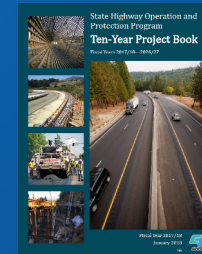
Performance & Financial Projections
& Target Monitoring



Attach Needs to Nominated
Projects to meet targets

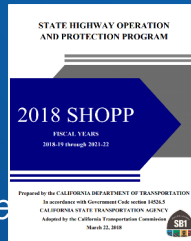
Project	Year 1	Year 2	Year 3	Year 4	Year 5	Year 6	Year 7	Year 8	Year 9	Year 10
...

10-Year Project Book



Funding
Commitments

Performance & Financial



Performance Objectives	Totals	2017/18				
Target Funding Allocation (BKC)	\$24,047,006	\$24,047,006				
Current FY17 Submitted Program	\$22,700,000	\$22,700,000				
Target Funding Balance (BKC)	\$1,347,006	\$1,347,006				
FY17 Commitment - 2017 FY17	\$1,347,006	\$1,347,006				
Submitted Program Cost (BKC)	\$1,347,006	\$1,347,006				
Project Cost Submitted FY17	\$1,347,006	\$1,347,006				
Compliance (BKC)	\$1,347,006	\$1,347,006				
Category	New	Fair	Phase	New	Fair	Phase
Bridge/Fail Replacement and Upgrade (2017/18 - 2020/21)	0	0	48,114	0	0	48,114
Performance (Expenditure) Submitted	0	71,824	67,250	0	0	0
Balance	0	-71,824	-19,700	0	0	48,114
Fail Replacement and Upgrade	0	26,811	26,811	0	0	0
Performance (Expenditure) Submitted	0	26,811	26,811	0	0	0
Balance	0	0	0	0	0	0
Collection/Security/Inspection	0	0	3,117	0	0	3,117
Performance (Expenditure) Submitted	0	0	3,117	0	0	0
Balance	0	0	0	0	0	3,117
Collection/Security/Inspection	0	0	0	0	0	0
Performance (Expenditure) Submitted	0	0	0	0	0	0
Balance	0	0	0	0	0	0
Collection/Security/Inspection	0	0	0	0	0	0
Performance (Expenditure) Submitted	0	0	0	0	0	0
Balance	0	0	0	0	0	0



District 7 (Los Angeles and Ventura Counties)

Prepared by the CALIFORNIA DEPARTMENT OF TRANSPORTATION
In accordance with Government Code, section 65002
CALIFORNIA STATE TRANSPORTATION AGENCY
Adopted by the California Transportation Commission
March 22, 2018

2019 SHSMP

SHOPP: First five years represent the pipelined SHOPP projects. Last five years constitute the SHOPP performance gap

Maintenance: All ten years constitute the Maintenance performance gap.



SHSMP Components

- **Needs Assessment (goal-constrained)**
 - Provides a picture of all the needs on SHS regardless of available resources.
 - Is determined by a performance-based gap analysis.
 - Captures the needs for preventive and corrective maintenance as well as minor and major rehabilitation and reconstruction.
- **Investment Plan (fiscally-constrained)**
 - Is constrained by available SHOPP and Maintenance resources.
 - Allocates available resources to specific objectives to effectively manage SHS.

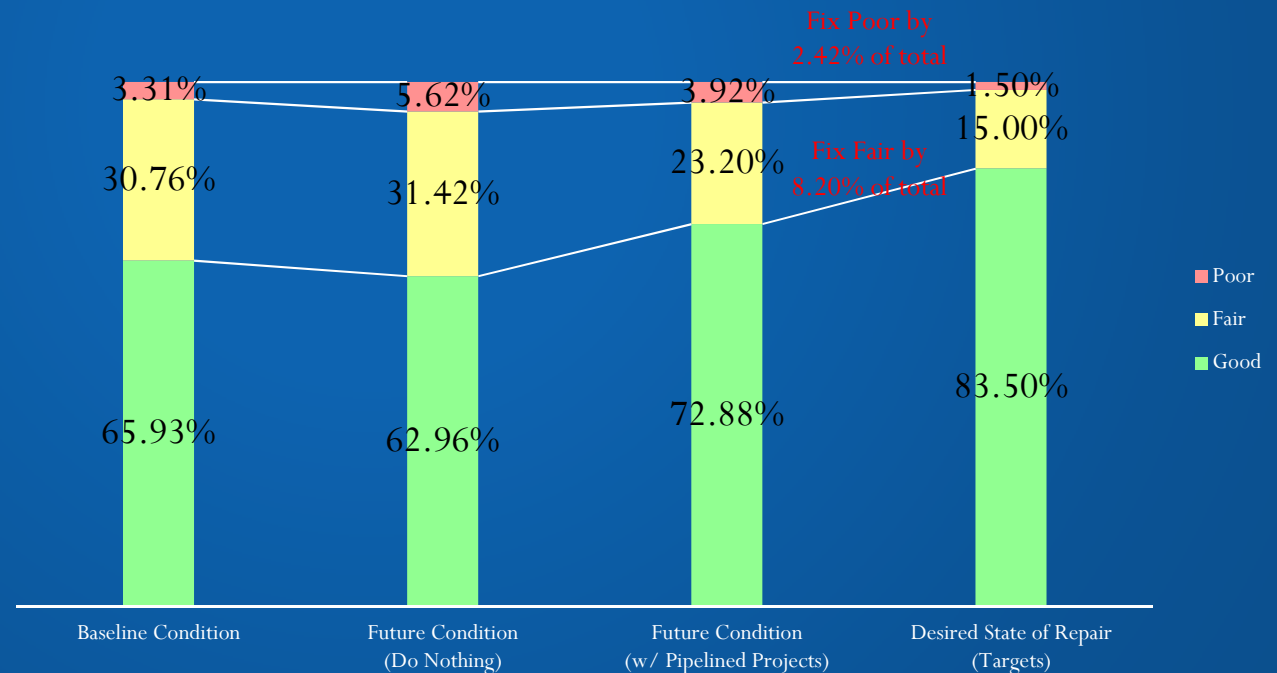


Performance-Based Gap Analysis

The need:

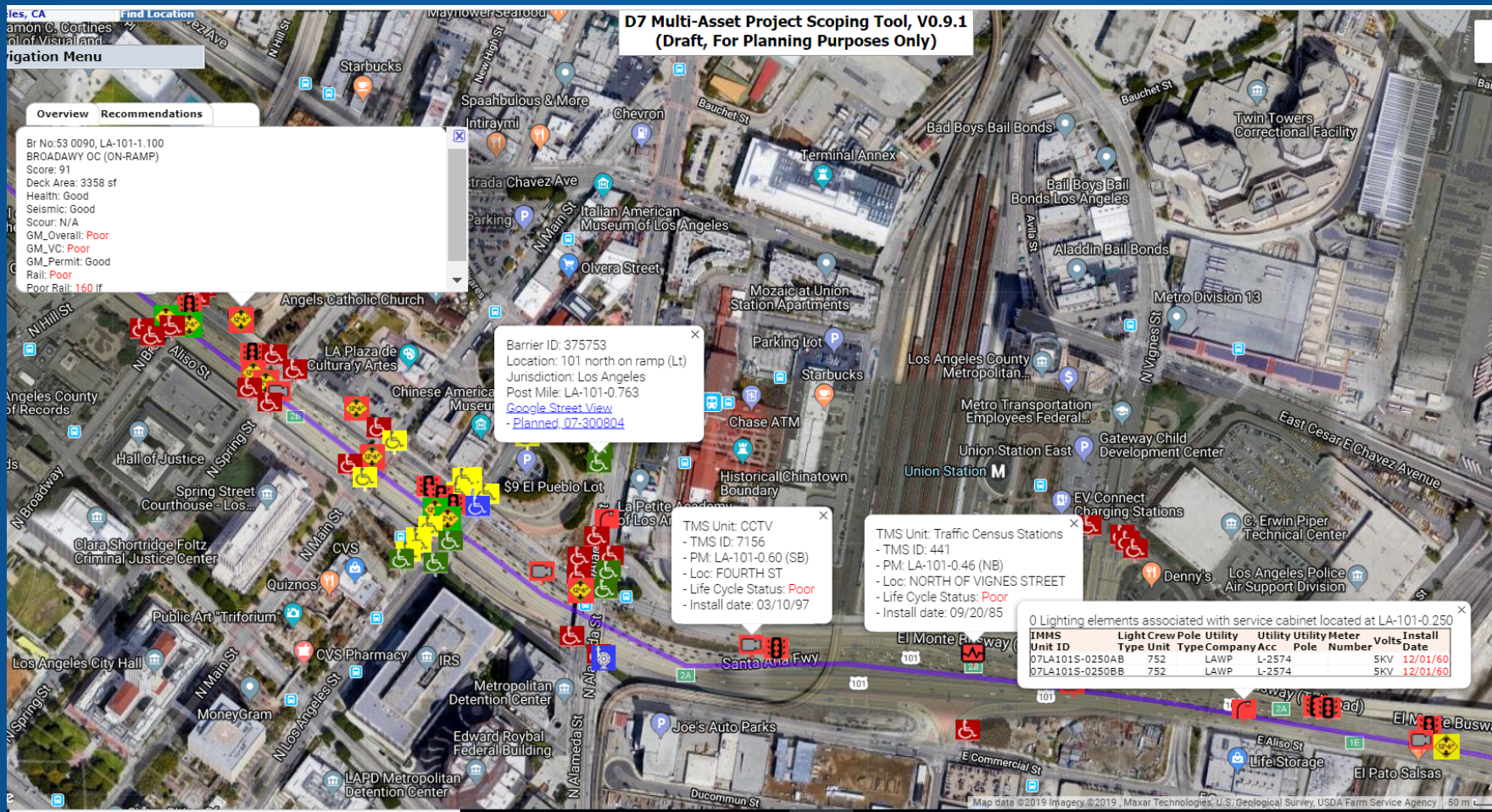
- Is a function of the baseline condition.
- Is a function of the pipelined projects.
- Is a function of deterioration rates.
- Is not a function of prior year allocations.

Bridge and Tunnel Health (Statewide Analysis)



District 7 (Los Angeles and Ventura Counties)

Multi-Asset Project Scoping Tool



District 7 (Los Angeles and Ventura Counties)

Listing of Actionable Needs

Actionable Needs on LA-101 between Post Miles 0 and 2

Please use Google Chrome or FireFox for best results

Click on the buttons inside the tabbed menu for detail:

Actionable Items are highlighted in red

[Pavement](#)
[Bridges](#)
[Drainage](#)
[TMS](#)
[ADA](#)
[Overhead Sign Structures & Signs](#)
[Lighting](#)
[BMP](#)
[Safety Barriers](#)
[Complete Streets](#)
[Fish Passage](#)

ADA Curb Ramp : Responsible Party - Sarah Horn, 213.897.6631

[Current ADA Highway Design Guidelines \(June 2018\)](#) |
 [1991 Design Standards](#) |
 [2010 Design Standards](#) |
 [PERMANENT PEDESTRIAN FACILITIES ADA COMPLIANCE HANDBOOK](#)

Record Count: **Compliant = 4** **Planned = 27** **Verify = 22** **Deleted = 0** **Non-Compliant = 32**

* Possible Difficulty Level: 4 = Both RW and Utility Issues, 3 = RW Only, 2 = Utility Only, 1 = No RW or Utility Issues

Post Mile	Barrier ID	Asset Type	Cross Street	Location	Issues	Status	Street View	Grievance Case	RW Acq	Utility Impact	Diff + Level	Latitude	Longitude	Estimate (\$)
0.389		Curb Ramp	N Vignes St	101 north on ramp (Rt)			Street View				1	34.054968	-118.232441	10,000
0.389		Curb Ramp	N Vignes St	101 north off ramp, island 1			Street View				1	34.054826	-118.232022	10,000
0.389		Curb Ramp	N Vignes St	101 north off ramp, island 2			Street View				1	34.054881	-118.232079	10,000
0.389		Curb Ramp	N Vignes St	101 north off ramp (Rt)			Street View				1	34.054758	-118.231938	10,000
0.476	375718	Curb Ramp	E Commercial St / Ramirez St	101 SB onramp - via Commercial	Flare Slope, Detectable Warning		Street View				1	34.0531167459	-118.233765225	10,000
0.492		Curb Ramp	E Commercial St	101 south on ramp (Rt)		Planned, 07-300804	Street View				1	34.053125	-118.233767	N/A
0.626		Curb Ramp	E 4th St	101 southbound on-ramp and Eagle St		Planned, 07-300804	Street View				1	34.042494	-118.221602	N/A
0.626	375822	Curb Ramp	E 4th St	NW corner of Hwy 101 southbound off-ramp and 4th st	Top Landing, Width, Cross Slope, Gutter Slope	???	Street View				1	34.043087	-118.221561	N/A
0.626	375823	Curb Ramp	E 4th St	NW corner of Hwy 101 southbound off-ramp and 4th st	Top Landing, Width, Cross Slope, Gutter Slope, Protruding Object, Detectable Warning, Defined Edges, Grade	???	Street View				1	34.0430860847	-118.221652653	N/A
0.626	375824	Curb Ramp	E 4th St	NE corner of Hwy 101 southbound off-ramp and 4th st	Top Landing, Running Slope, Cross Slope, Flare Slope, Abrupt Level Change, Detectable Warning, Grade Break	???	Street View				1	34.043067	-118.221385	N/A
0.626	375827	Curb Ramp	E 4th St	101 northbound off-ramp (Rt)	Top Landing, Running Slope, Flare Slope, Abrupt Level Change, Detectable Warning, Grade Breaks	Planned, 07-300804	Street View	10389			1	34.042919	-118.220672	N/A
0.626	375828	Curb Ramp	E 4th St	101 northbound off-ramp (Lt)	Top Landing, Cross Slope, Flare Slope, Gutter Slope, Abrupt Level Change, Protruding Object, Detectable Wa	Planned, 07-300804	Street View	10389			1	34.042924	-118.220807	N/A
0.626	375831	Curb Ramp	E 4th St	101 southbound on-ramp (Lt)	Top Landing, Running Slope, Flare Slope, Detectable Warning	Planned, 07-300804	Street View				1	34.04238	-118.221584	N/A
0.763	375741	Curb Ramp	N Alameda St	Alameda / Aliso, NW	Top Landing, Width, Running Slope, Flare Slope, Gutter Slope, Detectable Warning, Grade Breaks		Street View				1	34.053967	-118.238086	10,000
0.763	375744	Curb Ramp	N Alameda St	Alameda / Arcadia, NW	Top Landing, Running Slope, Cross Slope, Flare Slope, Gutter Slope, Abrupt Level Change, Detectable Warning		Street View				1	34.05469	-118.237997	10,000
0.763	375745	Curb Ramp	N Alameda St	Entrance to Express Lane (Lt)	Top Landing, Cross Slope, Gutter Slope, Abrupt Level Change, Detectable Warning, Bottom Landing		Street View				1	34.054867	-118.237625	10,000
0.763	375750	Curb Ramp	N Alameda St	Alameda / Arcadia, SW	Top Landing, Running Slope, Cross Slope, Flare Slope, Abrupt Level Change, Detectable Warning, Grade Break		Street View				1	34.054513	-118.238007	10,000



District 7 (Los Angeles and Ventura Counties)

Desired Outcome

- Having the right information to make good decisions
- Providing a strategic framework for consistent decision making
- Demonstrating asset needs with quantitative information is compelling
- Minimizing long term costs of ownership through life-cycle planning
- Being a fiduciary and be accountable for public funds
- Supporting the 2015-2020 Caltrans Strategic Management Plan's Stewardship and Efficiency goal explicitly and all other goals through project accomplishments



Opportunities

- Implement more multi-asset projects
- Utilize quality data to help develop better project scope efficiently
- Develop project and implement codependent item effectively
- Avoid construction fatigue, inconvenience the public once



Questions?

Roger C. Yoh
District 7 Asset Manager
213.897.3669

Hamid Saadatnejadi
District 7 Acting Asset Manager
213.897.1662

Caltrans Transportation Asset Management
<https://dot.ca.gov/programs/asset-management>

Rebuilding California SB 1
<http://rebuildingca.ca.gov/>



District 7 (Los Angeles and Ventura Counties)