

Transformation at Los Angeles World Airports, and the CIP



Greg S. Campbell, P.E.
Chief Airports Engineer II
Los Angeles World Airports

- Served 87.5M Passengers in 2018
- 4th Busiest Commercial Airport in the World
- Ranked 2nd Most Improved Airport in the U.S. (J.D. Power 2018)
- Top 10 “Best of the U.S.’s Big Airports” (Wall Street Journal)
- “Best Overall Customer Service Program” (ACI – North America)



CAPITAL PRIORITIES

Los Angeles World Airports (LAWA) established framework for prioritizing capital investments to ensure investments enable strategic priorities and solve critical business challenges, and determined in what areas it should focus its limited, capital dollars. As a result, all projects must achieve outcomes in one of the following capital priorities:



In addition, LAWA will follow these four foundational principles in developing all projects that are included in the Capital Program:

Delivering Safety and Security	Benefitting Our Community
Minimizing Environmental Impact	Ensuring Financial Stewardship

IMPROVING THE GUEST EXPERIENCE

LAXceptional Xperience Standards: iCARE LAX



Informative

Showcasing all things LAX - its people, its facilities, its services and amenities



Courteous

Exuding excitement and the warmth of L.A.



Approachable

Creating exceptional memorable moments.



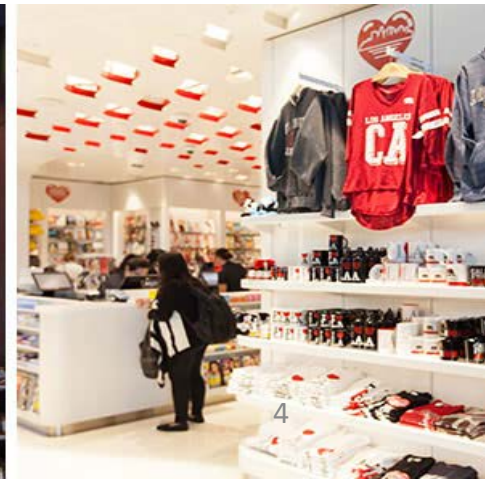
Responsive

Demonstrating integrity and empathy.



Efficient & Effective

Respecting our guests' time and experiences.



AIRFIELD PROGRAM



AIRFIELD CURRENT and FUTURE

19	Qantas Freight	149.3
20	LAX Police	128.7
21	Imperial Terminal / Flight Path Museum	135.5
22	Gate Gourmet	153.7
23	Flying Food Group	144.0
24	Mercury Air Cargo Services / Eva Air Cargo	159.8
25	Clark McCarthy	147.8
26	Gate Gourmet	135.6
27	Facilities & Engineering	126.5
28	Swissport	129.5
29	Servisair	132.2
30	LAWA Inspector's Office	124.7
31	LAWA Pistol Range	119.3

226	Remote Gate	135.2
227	Remote Gate	135.4
228	Remote Gate	135.7
229	Remote Gate	136.4
230	Remote Gate	129.3
231	Remote Gate	128.6
232	Qantas Airlines Maintenance Hanger	

**New North Airfield Exit Taxiways;
Taxiways Y & Z Decommissioning**

LAX NOR HSIDE

New MSC Taxiway

**New Taxiway D
Extension
(Twy AA to West End)**

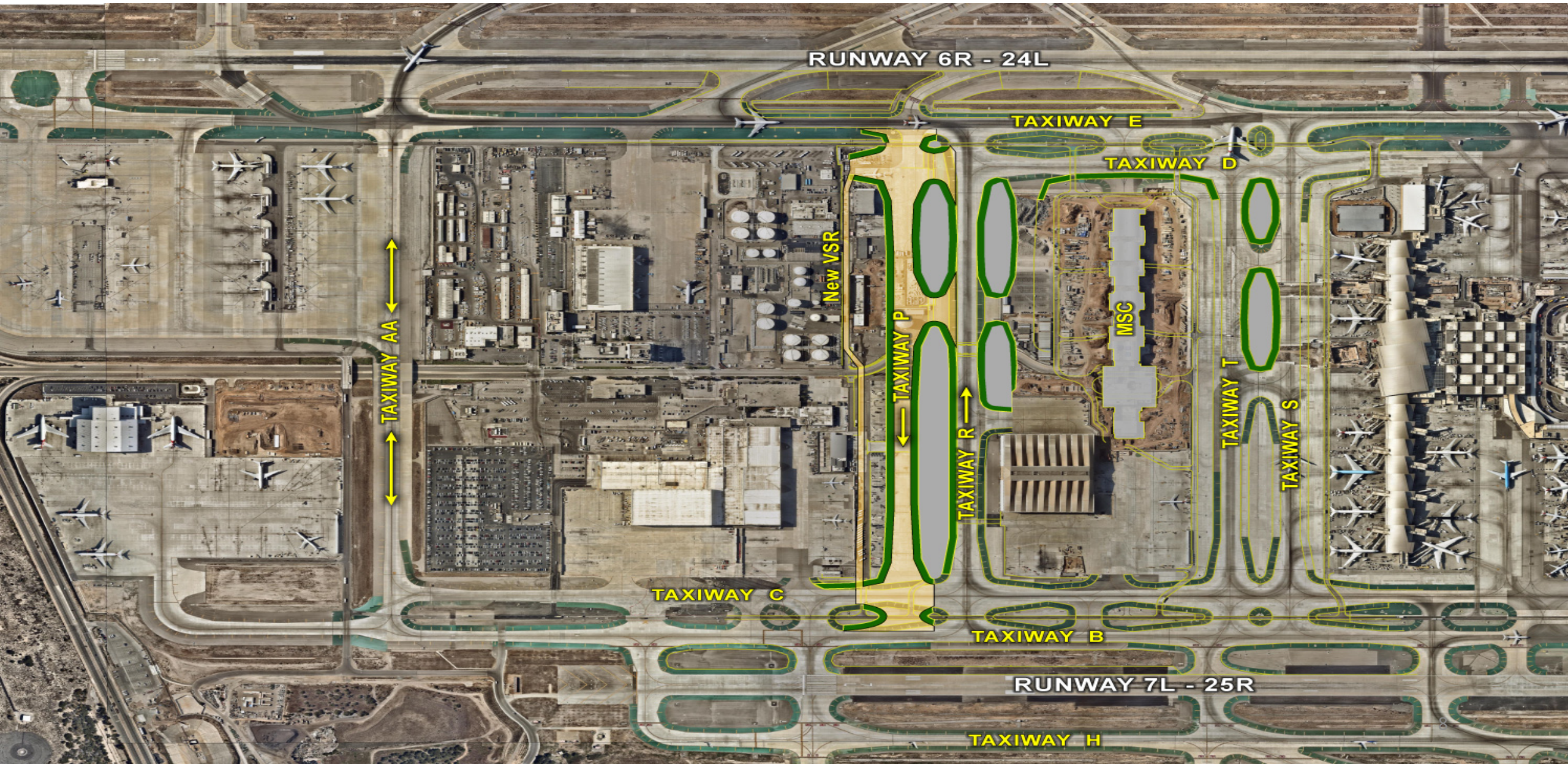
**New Taxiway D
Extension
(Twy C14 to Twy AA)
& Enabling Projects**

New Taxiway T

New Taxiway C14

**Runway 7R-25L
Reconstruction**

CROSSFIELD TAXIWAYS

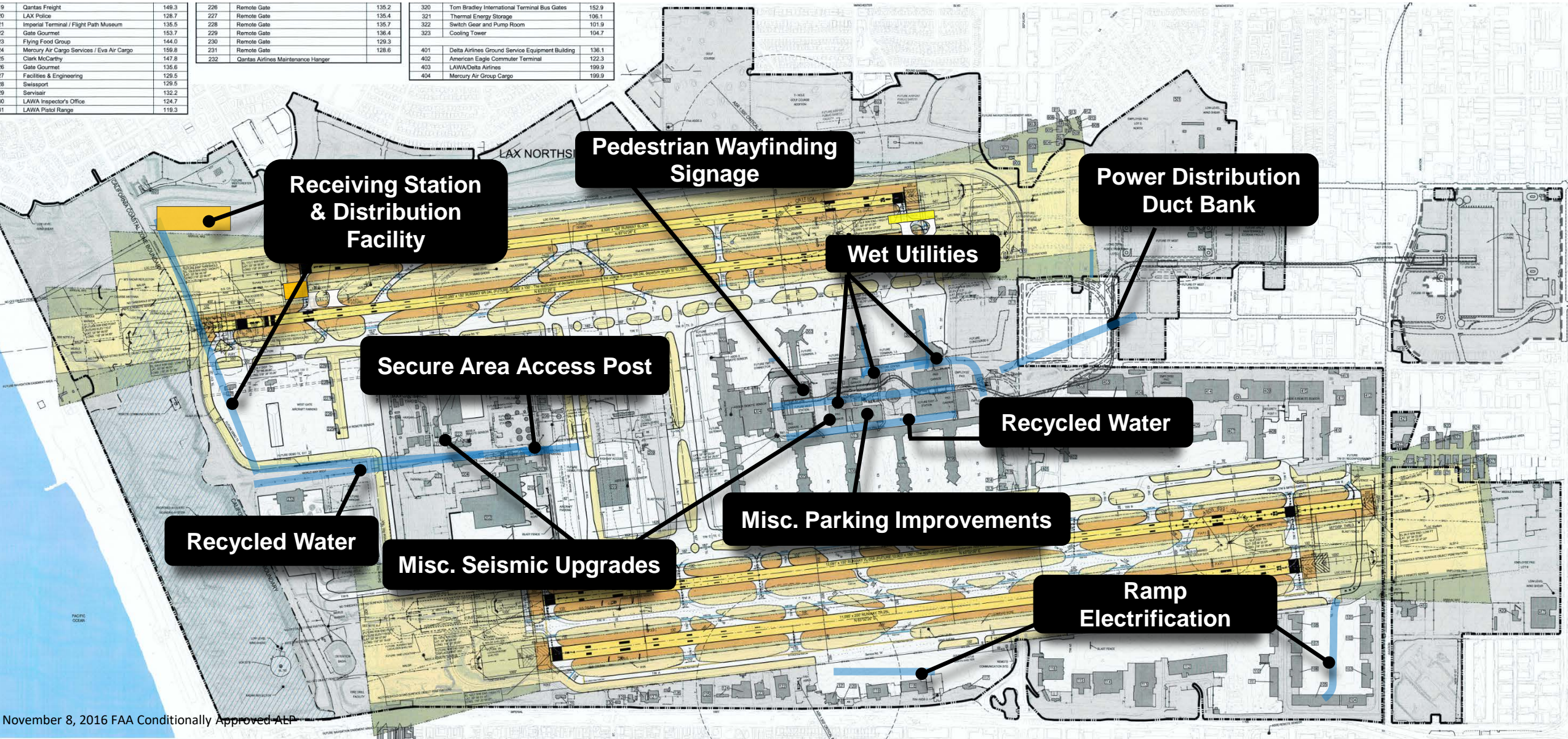


UTILITIES and INFRASTRUCTURE

9	Qantas Freight	149.3
10	LAX Police	128.7
11	Imperial Terminal / Flight Path Museum	135.5
12	Gate Gourmet	153.7
13	Flying Food Group	144.0
14	Mercury Air Cargo Services / Eva Air Cargo	159.8
15	Clark McCarthy	147.8
16	Gate Gourmet	135.6
17	Facilities & Engineering	129.5
18	Swissport	129.5
19	Serviceair	132.2
20	LAWA Inspector's Office	124.7
21	LAWA Pistol Range	119.3

226	Remote Gate	135.2
227	Remote Gate	135.4
228	Remote Gate	135.7
229	Remote Gate	136.4
230	Remote Gate	129.3
231	Remote Gate	128.6
232	Qantas Airlines Maintenance Hangar	

320	Tom Bradley International Terminal Bus Gates	152.9
321	Thermal Energy Storage	106.1
322	Switch Gear and Pump Room	101.9
323	Cooling Tower	104.7
401	Delta Airlines Ground Service Equipment Building	136.1
402	American Eagle Commuter Terminal	122.3
403	LAWA/Delta Airlines	199.9
404	Mercury Air Group Cargo	199.9



TERMINAL RENOVATION PROGRAM



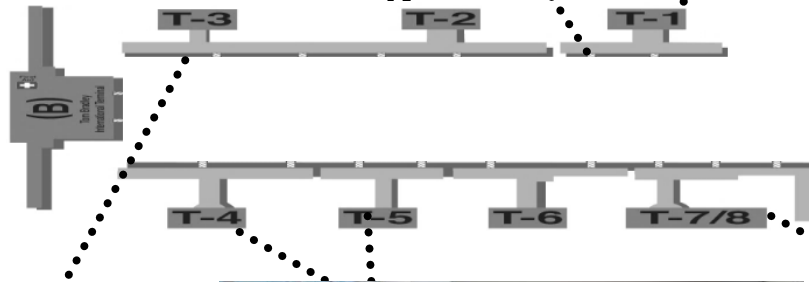
TERMINAL 2
Concourse



TERMINAL 1.5
Southwest Airlines Modernization Program



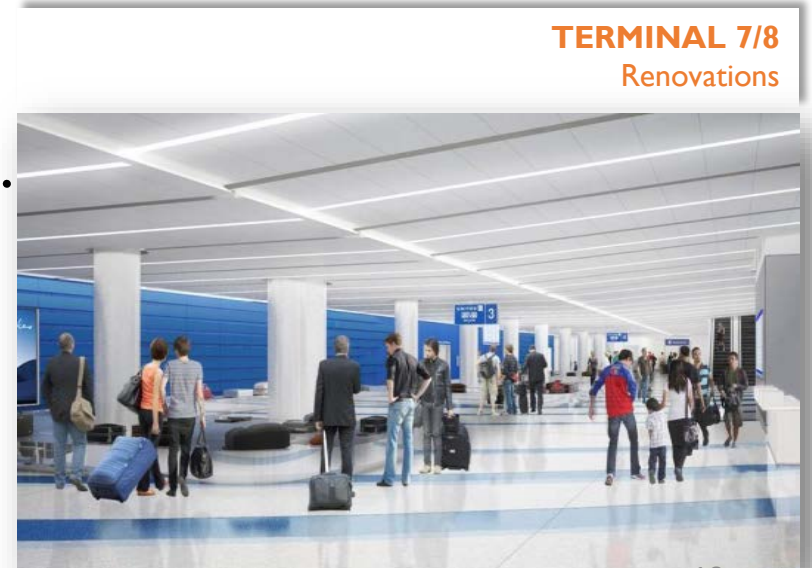
TERMINAL 1
Southwest Airlines Modernization Program



TERMINAL 3
Arrivals Level



TERMINALS 4/5
American Airlines Modernization Program



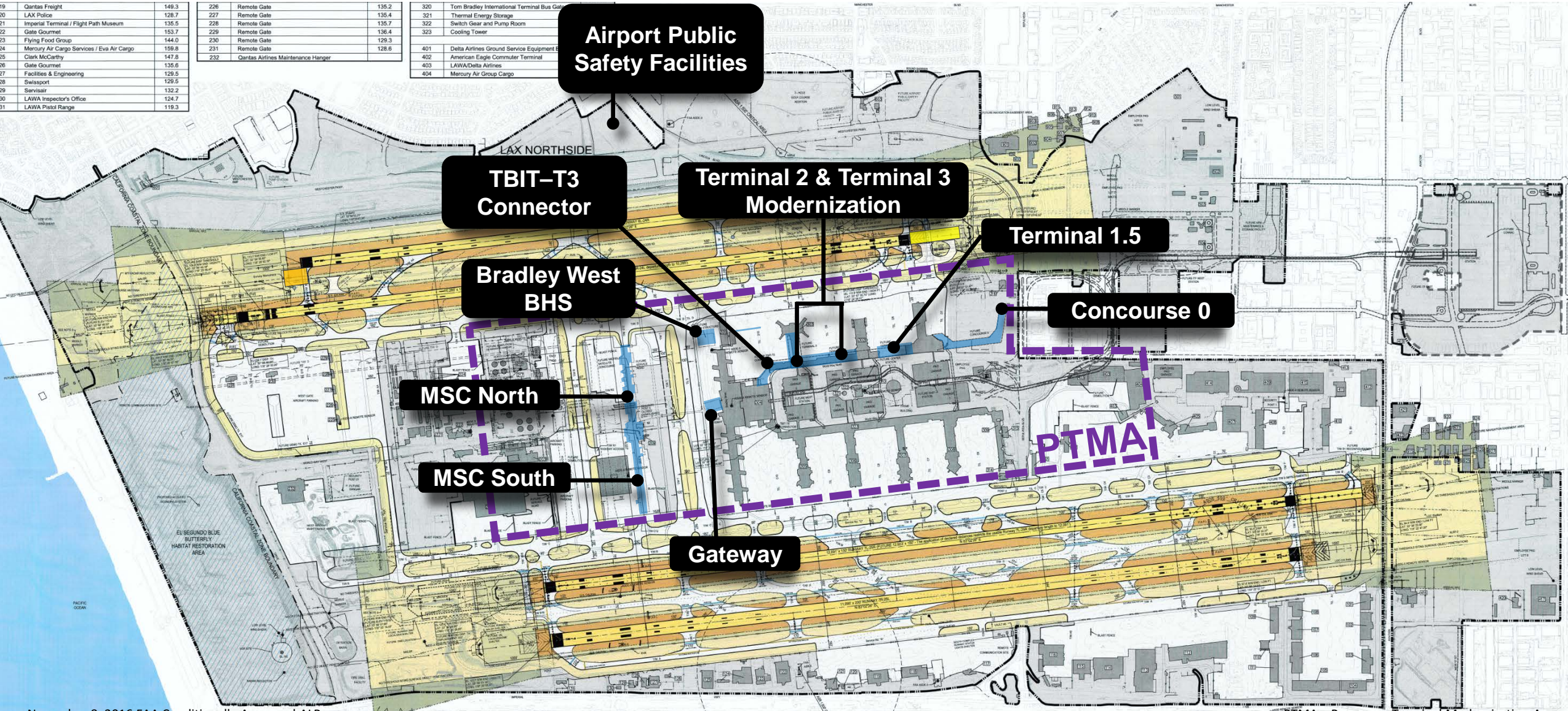
TERMINAL 7/8
Renovations

NEW BUILDINGS and TERMINAL COMPONENTS

19	Qantas Freight	149.3
20	LAX Police	128.7
21	Impartial Terminal / Flight Path Museum	135.5
22	Gate Gourmet	153.7
23	Flying Food Group	144.0
24	Mercury Air Cargo Services / Eva Air Cargo	159.8
25	Clark McCarthy	147.8
26	Gate Gourmet	135.6
27	Facilities & Engineering	129.5
28	Swissport	129.5
29	Servisair	132.2
30	LAWA Inspector's Office	124.7
31	LAWA Pilot Range	119.3

226	Remote Gate	135.2
227	Remote Gate	135.4
228	Remote Gate	135.7
229	Remote Gate	136.4
230	Remote Gate	129.3
231	Remote Gate	128.6
232	Qantas Airlines Maintenance Hanger	

320	Tom Bradley International Terminal Bus Garage	
321	Thermal Energy Storage	
322	Switch Gear and Pump Room	
323	Cooling Tower	
401	Delta Airlines Ground Service Equipment Building	
402	American Eagle Commuter Terminal	
403	LAWA/Delta Airlines	
404	Mercury Air Group Cargo	



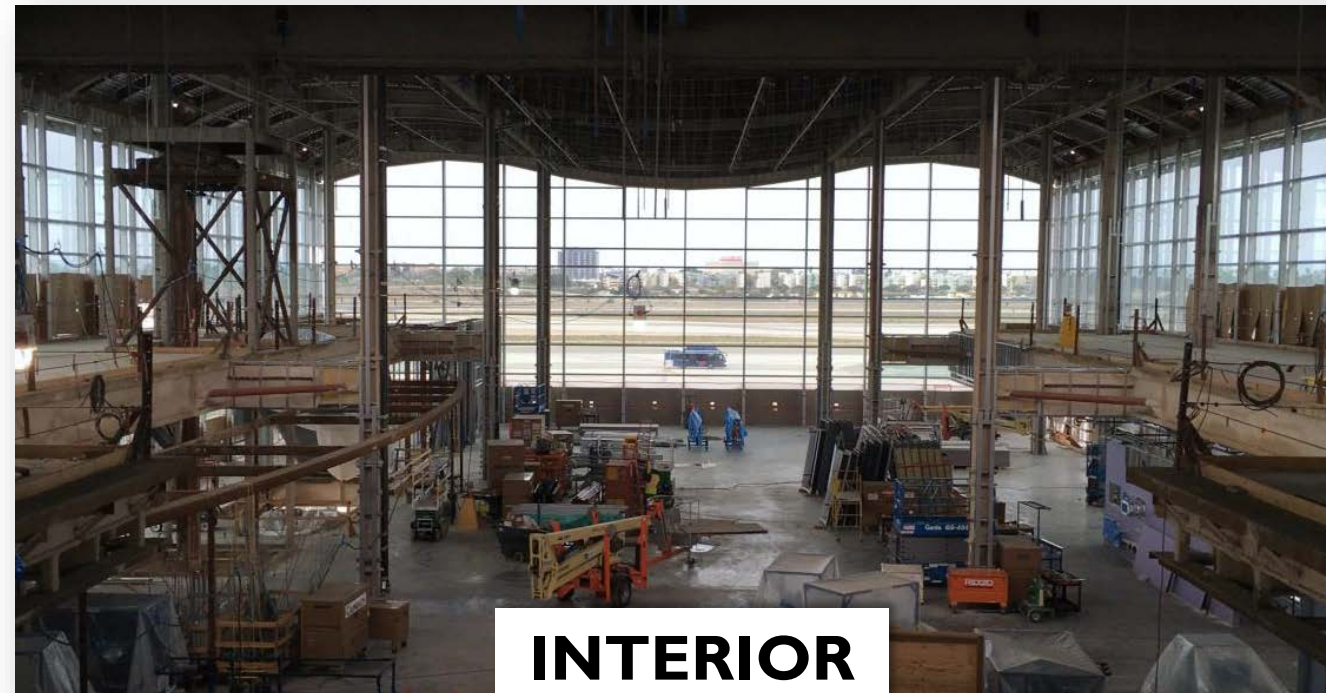
MIDFIELD SATELLITE CONCOURSE



MIDFIELD SATELLITE CONCOURSE



CONCOURSE PANORAMA



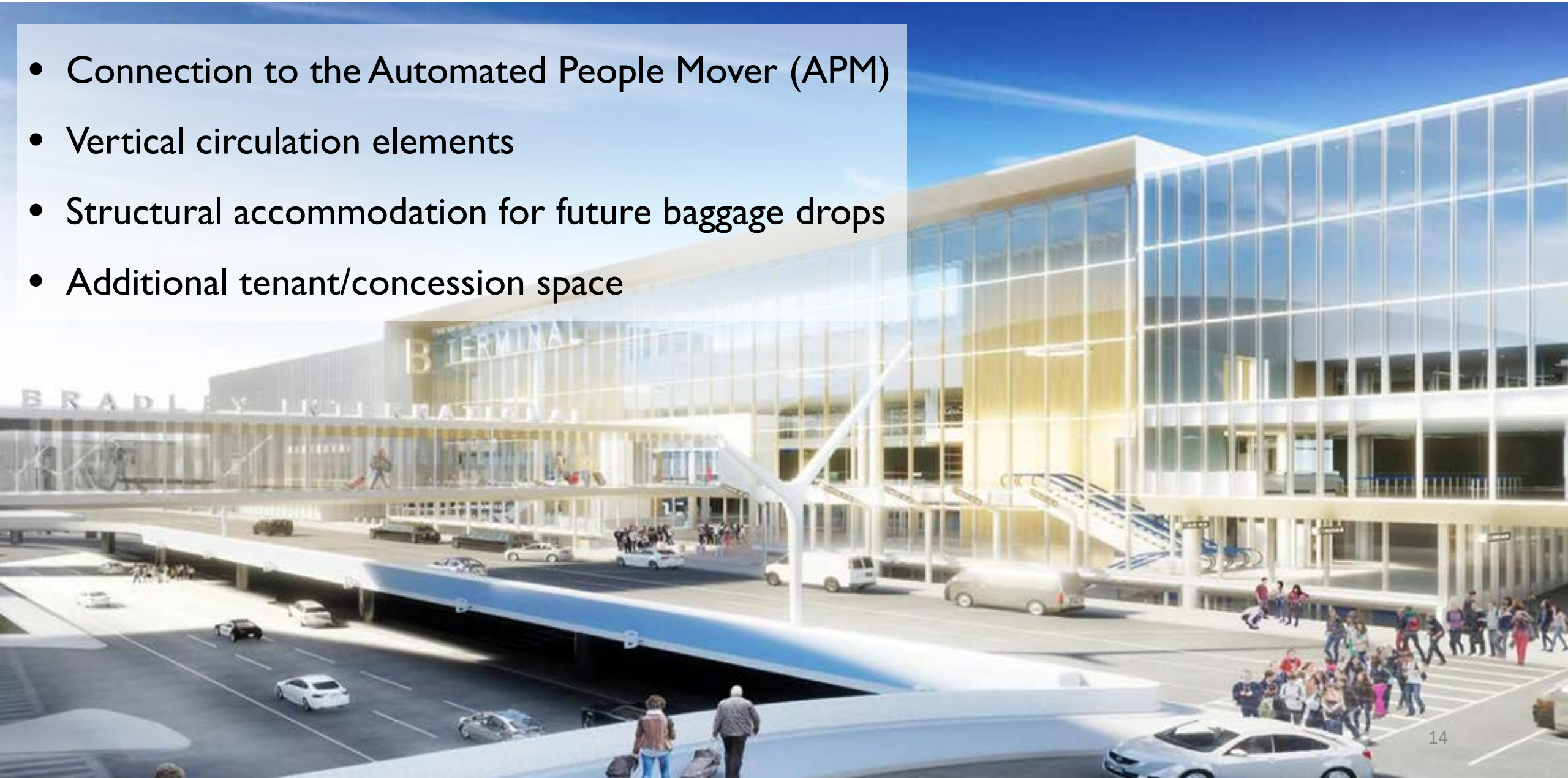
INTERIOR



EXTERIOR

TERMINAL DEVELOPMENTS

- Connection to the Automated People Mover (APM)
- Vertical circulation elements
- Structural accommodation for future baggage drops
- Additional tenant/concession space



AIRPORT POLICE FACILITY



- Approximate cost: \$220 Million
- 163,000 sq. ft.
- 40,000 sq. ft. practice range
- 12 ft. wide paseo along Westchester Parkway

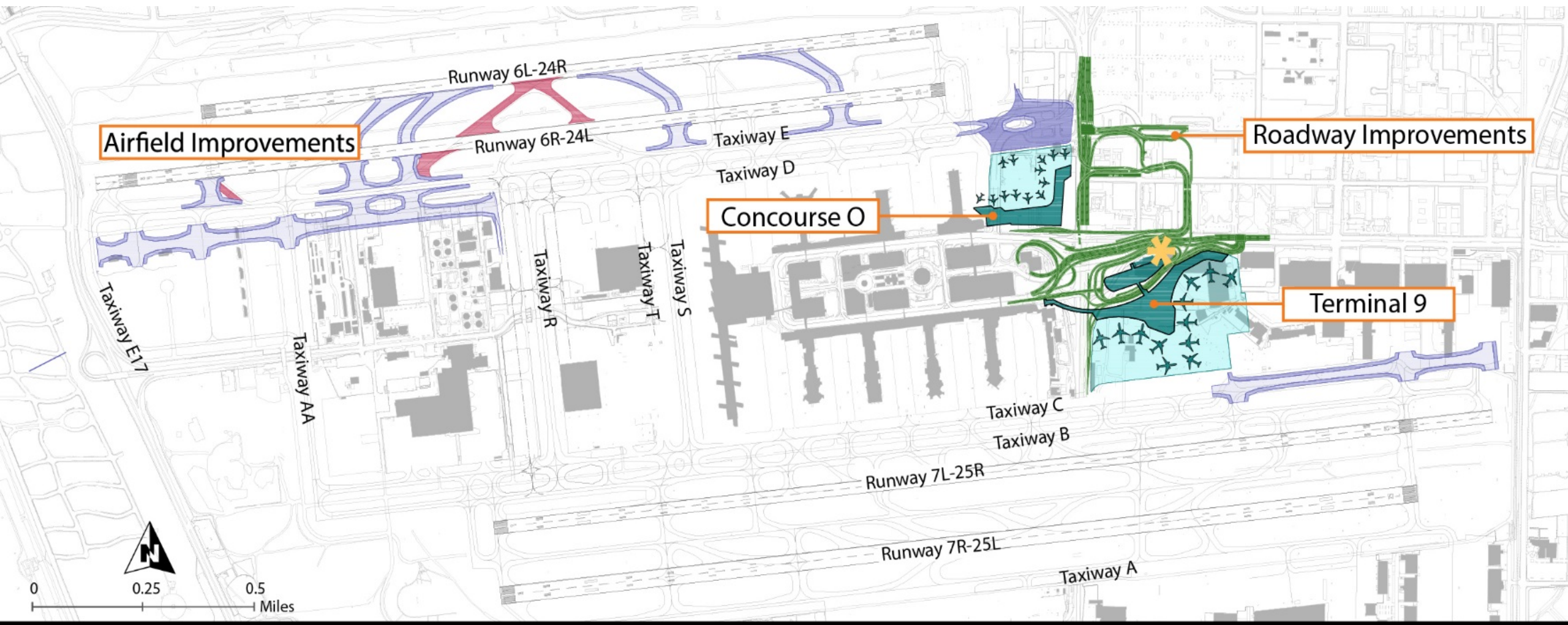
LANDSIDE ACCESS MODERNIZATION PROGRAM (LAMP)



- Automated People Mover (APM) operational 2023
- Airport Metro Connector – Direct connection to APM in 2023
- Consolidated Rent-A-Car Facility operational 2023
- Intermodal Transportation Facility – West: Opens 2021

~ PROPOSED ~

AIRFIELD TERMINAL AND MODERNIZATION PROJECT



- Airfield Improvements
- Taxiway to be Removed or Decommissioned
- Terminal and Related Improvements
- Roadway Improvements
- Automated People Mover Station

PROCUREMENTS AT LAX

- Midfield Satellite Concourse - South
- Secured Area Access Post (SAAP) -Westside
- Receiving Station X (RS-X)
- Fire Drill Training Facility Recommissioning
- CTA Domestic Water Pipe Replacement
- South Pads Electrification
- Runway 7R-25L Rehabilitation
- Northside Development
- Century Cargo Complex

PROCUREMENT OUTLOOK

EST. TOTAL PROJECT COST	PROJECT NAME & DESCRIPTION	ANTICIPATED ADVERTISEMENT
PROFESSIONAL SERVICES (Includes Planning or Design)		
	Midfield Satellite Concourse (MSC) South	
TBD	<i>This project is envisioned to include a new concourse with 6 - 12 new aircraft gates and the associated civil & airfield improvements. The project will also include a direct passenger connection between the MSC North and MSC South.</i>	Q1 2019
	Construction Impact and Logistics Services	
\$10M - \$100M	<i>LAWA seeks the services of a professional construction or construction logistics firm to assess the global logistics and potential impacts facing LAWA as a result of its recently approved Capital Improvements Program.</i>	Q2 2019
CONSTRUCTION SERVICES (Includes Alternative Delivery Methods)		
	Fire Drill Training Facility Recommissioning	
	<i>This project involves regulatory compliance repairs, improvements, and the recommissioning of the onsite LAX fire drill training facility.</i>	Q1 2019
	Bradley West Off-Airport Traffic Mitigation - Sepulveda Blvd. and Imperial Highway	
< \$10M	<i>This project implements a traffic mitigation measure (adding a second northbound right-turn lane) at the intersection of Sepulveda Blvd. at Imperial Hwy.</i>	Q2 2019
	CTA Chilled Water & Hot Heating Water Distribution Pipe Rehabilitation Phase 1	
	<i>This project replaces and upsizes the existing chilled water and heating hot water pipes in the Central Terminal Area (CTA) to meet future demands.</i>	Q4 2019
	Continental G.O. Building Demolition	
	<i>This project demolishes the former Continental Airlines General Office (GO) Building. The scope of work includes hazardous material abatement, decoupling of utilities and constructing new exterior walls in specified location.</i>	Q1 2019
	Secured Area Access Post (SAAP) -Westside	
	<i>This project will construct a Secured Area Access Post (SAAP) on the Westside of the LAX campus.</i>	Q1 2019
	Taxiway A Reconstruction Phase 2 (VNY)	
\$10M - \$100M	<i>This project will reconstruct approximately 8,000ft of taxiway pavement from Taxiway R to Taxiway C at VNY. The scope of work includes the full reconstruction of Taxiway A pavement, connector taxiway reconstruction, airfield lighting and signage improvement, pavement marking and infield grading and drainage improvements.</i>	Q3 2019
	Runway 7R-25L Rehabilitation	
	<i>This project will reconstruct Runway 7R-25L and associated exit taxiways deteriorated concrete pavement to extend the useful life and minimize airfield operational impacts.</i>	Q3 2019
	CTA Domestic Water Pipe Replacement (D-B)	
	<i>This project replaces the existing domestic water infrastructure in the CTA, provides dual branch pipelines and valves to each terminal, and "smart" water meter for each terminal and building.</i>	Q1 2020
	Taxiway P (Formerly Taxiway C-14)	
	<i>The project constructs a new Crossfield Taxiway from Taxiway B to Taxiway E including demolition and/or relocation of existing facilities and the extension of Taxiway C west of Taxiway AA.</i>	Q2 2019
>\$100M	Receiving Station X (RS-X) (D-B)	
	<i>This project will provide a new Power Distribution Facility, associated power distribution duct banks and infrastructure to meet future power demands.</i>	Q2 2019



To learn of upcoming opportunities at Los Angeles World Airports:

<https://www.lawa.org/en/lawa-businesses/lawa-how-to-do-business-with-lawa> (How to do Business with Los Angeles World Airports)

For further assistance contact Business, Jobs and Social Responsibility:

Website: www.jobsatlax.org

Email: businessandjobs@lawa.org

For other City of Los Angeles opportunities:

www.labavn.org



**"Best Design and
Best Overall Concessions
Program"**

-ARN

**"Top 10
Most Improved
Airport"**

-SKYTRAX

LAX *ceptional
perience*

GOLD-STANDARD AIRPORTS – DELIVERED!