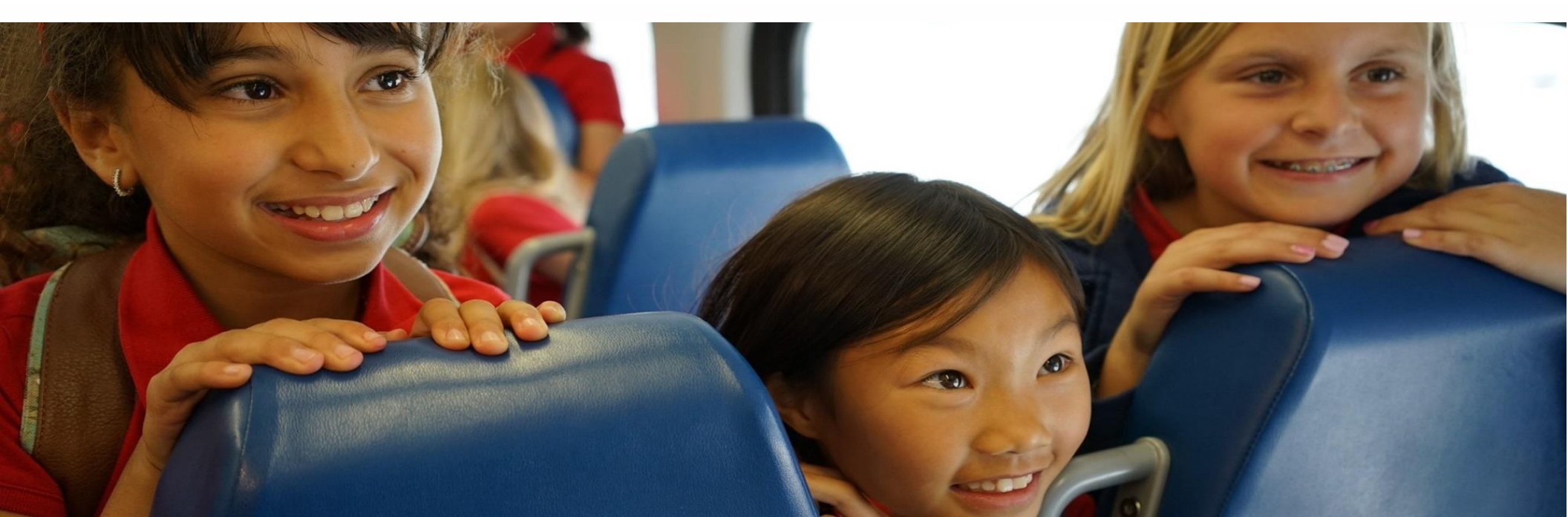


Metrolink Capital Update

ACEC-LA



September 18, 2019



METROLINK[®]

CREATE VALUE, EXCEED EXPECTATIONS

CUSTOMER-FIRST: SAFETY & SECURITY • AN INTEGRATED SYSTEM • MODERNIZING BUSINESS PRACTICES

CEO VISION



CUSTOMER-FIRST ORIENTATION

- *SAFETY & SECURITY**
- *AN INTEGRATED SYSTEM**
- *MODERNIZED BUSINESS PRACTICES**

Create Value, Exceed Expectations



METROLINK COMMUTER RAIL SYSTEM



Antelope Valley Line	Station Served by Multiple Lines
Inland Empire-Orange County Line	Amtrak Pacific Surfliner
Orange County Line	Metro Rail/Metro Bus
Riverside Line	LAX FlyAway Bus
San Bernardino Line	Coaster Oceanstyle to San Diego
Ventura County Line	Sprinter Oceanstyle to Escondido
91/Perris Valley Line	
Future Station	
Under Construction	

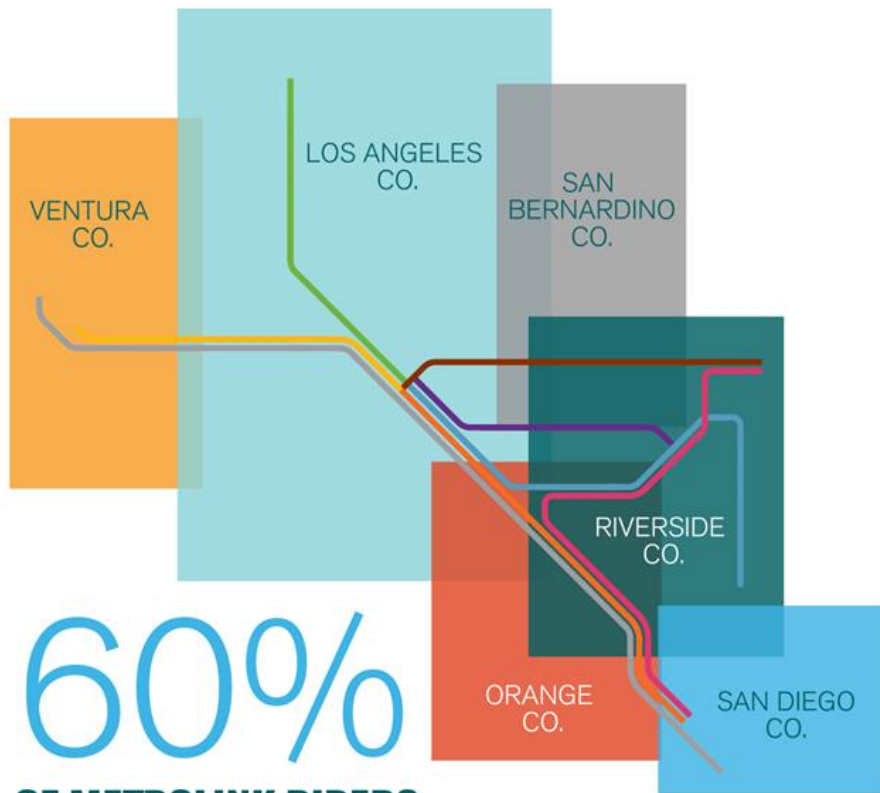
* Formerly Burbank/Bob Hope Airport Station
 ** Formerly San Bernardino Station

metrolinktrains.com

METROLINK.



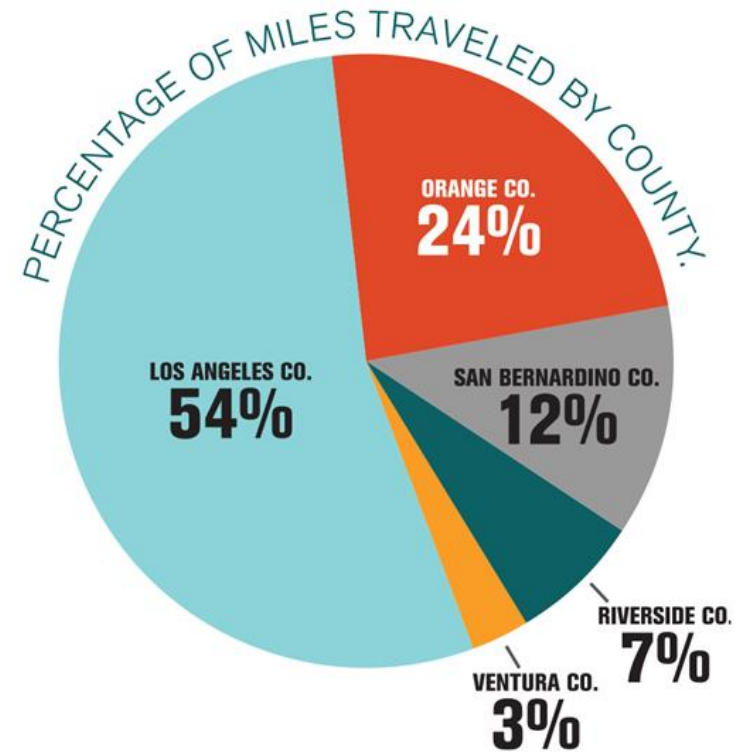
Metrolink in Southern California



60%
**OF METROLINK RIDERS
 TRAVEL ACROSS COUNTY LINES**

METROLINK CARRIES PASSENGERS ACROSS CITY AND COUNTY LINES TAKING RIDERS FROM CITY-TO-CITY, COUNTY-TO-COUNTY FOR A REGION-WIDE COMMUTE.

EACH YEAR METROLINK TRAINS TRAVEL
2.7 MILLION MILES



New Executive Leadership Team



Elisabeth Lazuardi
Internal Audit



Stephanie Wiggins
Chief Executive Officer



Don Del Rio
General Counsel



Ronnie Campbell
Chief Financial Officer



Don Filippi
Chief Safety, Security
& Compliance



Justin Fornelli
Chief Program Delivery



Patricia Francisco
Chief, Human Resources



Eric Hosey
Chief Operating Officer



Darrel Maxey
Chief Mobilization Transition
& Special Projects



Todd McIntyre
Chief, Strategy Officer



Noelia Rodriguez
Chief of Staff



Jennifer Vides Hirsch
Chief Marketing &
Communication Officer



Modernizing Business Practices

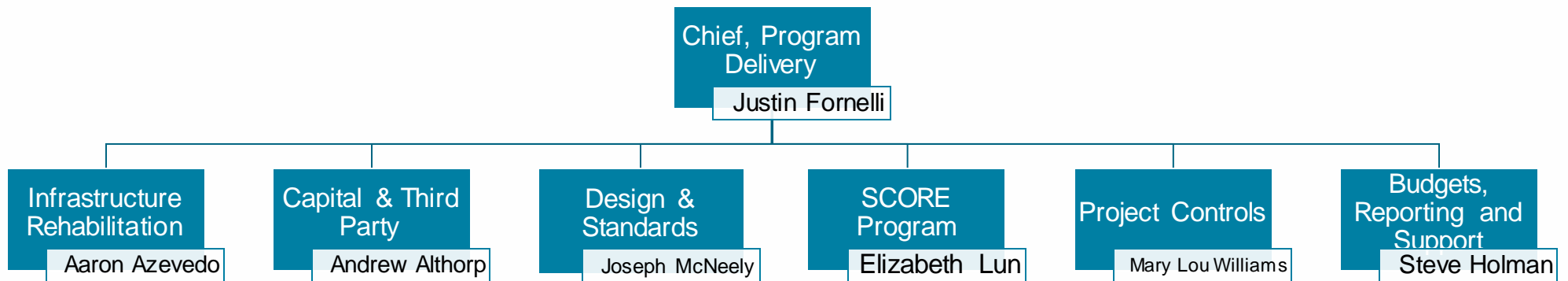
New Department -- Program Delivery

Improvements in Procurement

- New Director Bao Huynh
- Updated Contract Policies & Procedures
- Increased DBE/SBE Participation



PROGRAM DELIVERY



Metrolink 25 Year Rehabilitation Plan (MRP)

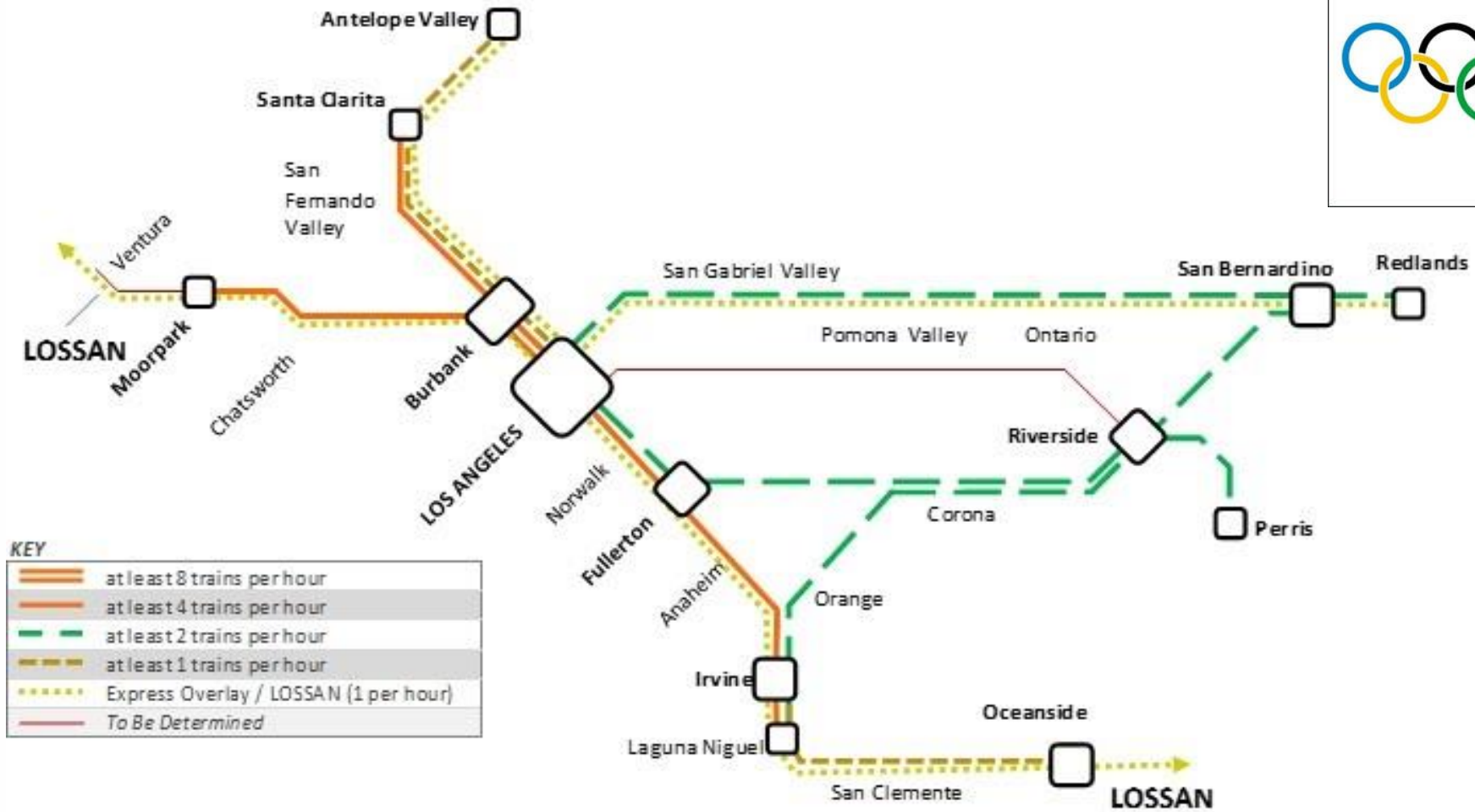
Includes all assets

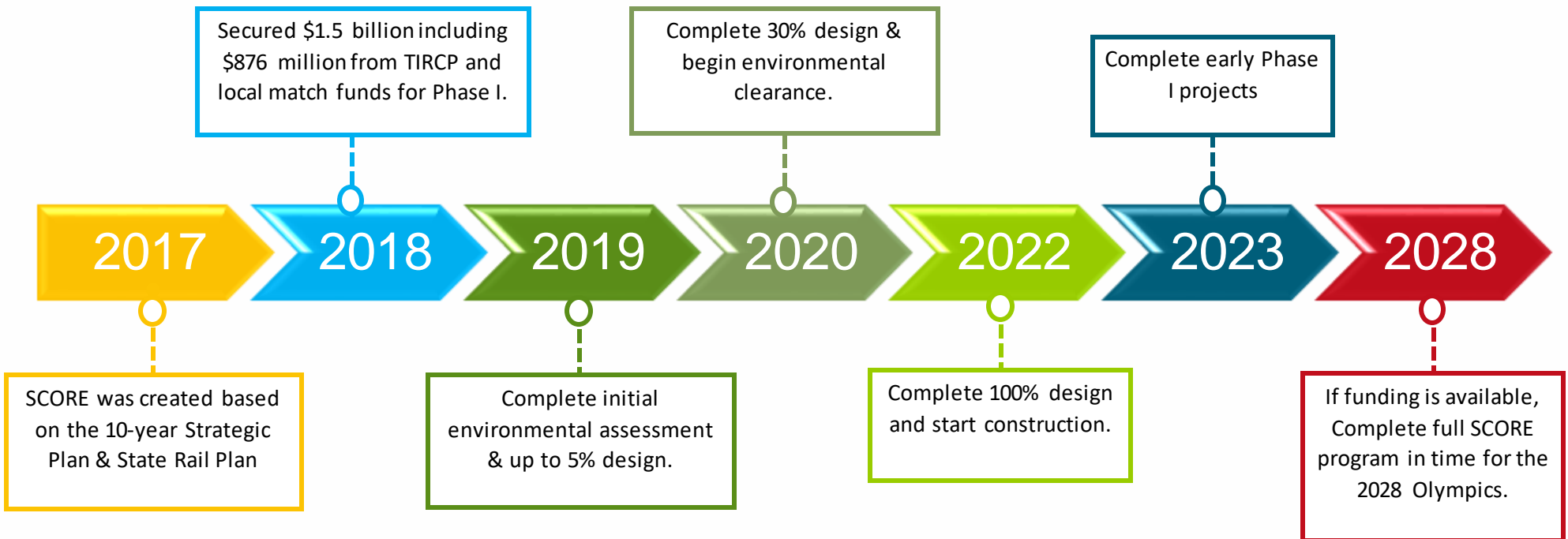
Covers over 361 route miles of track, which includes:

- Over 3.8 million ft of rail
- Over 1.1 million ties (concrete or wood)
- Various types of fasteners and ballast)
- 285 crossings
- 442 turnouts
- 261 Bridges
- 580 Culverts
- 6 tunnels



Southern California Optimized Rail Expansion





Open and Upcoming Procurements

Open Procurements:

- Rail Operations, Maintenance, and Support Services (Big Bundled Operating Contract) – proposals due October 11th
- On-Call General Engineering Consulting Services – proposals due October 3rd

Upcoming Procurements:

- SCORE Program Management Consultant – RFP release in October 2019
- SCORE Final Design Services – RFP release in October 2019
- Strategic Business Plan – RFP release in October 2019
- Planning Support Services – RFP release in October 2019
- Union Station Signal & Track Modernization & Rehab Construction – RFP release in October 2019
- Market Research Bench – RFP release in October 2019.
- Federal Legislative Representation Services -- RFP release December 2019.
- Marketing Communication Bench – RFP release date December 2019.



CORPORATE PARTNER PROGRAM



- A pre-tax benefit saving employees up to \$265/month
- New accounts receive a 25% discount on all tickets for first six months
- Employers save on payroll taxes, while reducing annual parking costs
- Employers can increase recruitment opportunities



METROLINK CARES



THE
WILEYCENTER

Making a Difference in the
Lives of Children

FR1ENDS of the
CH1LDREN
Los Angeles

THANK YOU

