



# **An Overview of On-going Projects & Programs in the *San Gabriel Valley***

***American Council of Engineering Companies (ACEC)  
Los Angeles Chapter***

***May 19, 2021***

***Presented by:***

***Eric C. Shen, PE, PTP***

***Director of Capital Projects/Chief Engineer***

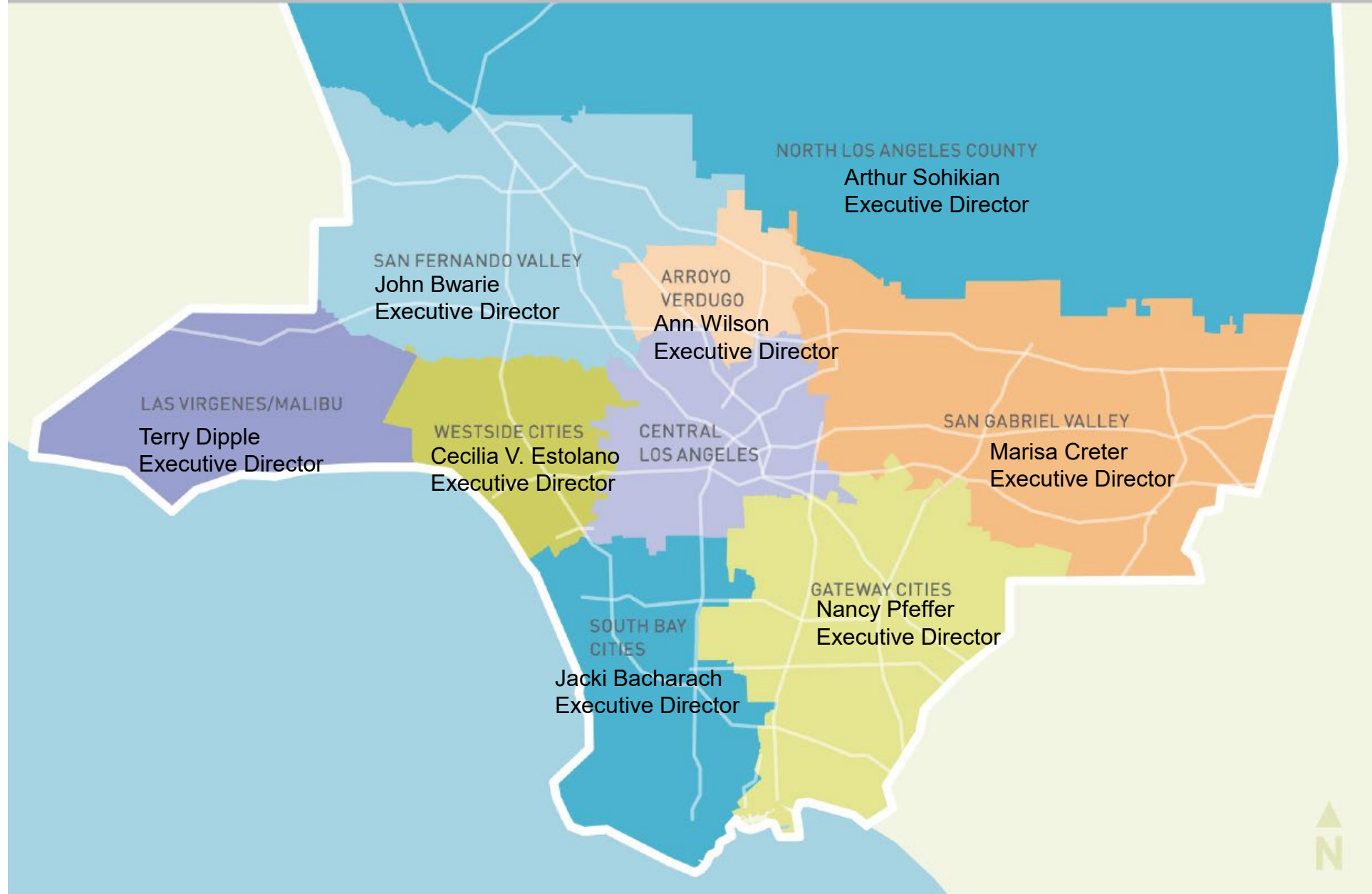
# San Gabriel Valley Council of Governments (SGVCOG) :

The largest and most diverse sub-regional council of governments in Los Angeles County

- The SGVCOG is a regional government planning agency that aims to maximize the quality of life.
- The SGVCOG is a Joint Powers Authority (JPA) consists of 31 incorporated cities, unincorporated communities in Los Angeles County Supervisorial Districts 1, 4, and 5, and three San Gabriel Valley Municipal Water Districts (San Gabriel Valley Municipal Water District, Three Valleys Municipal Water District, and Upper San Gabriel Valley Municipal Water District).
- It encompasses more than 374 square miles with more than 2 million residents.

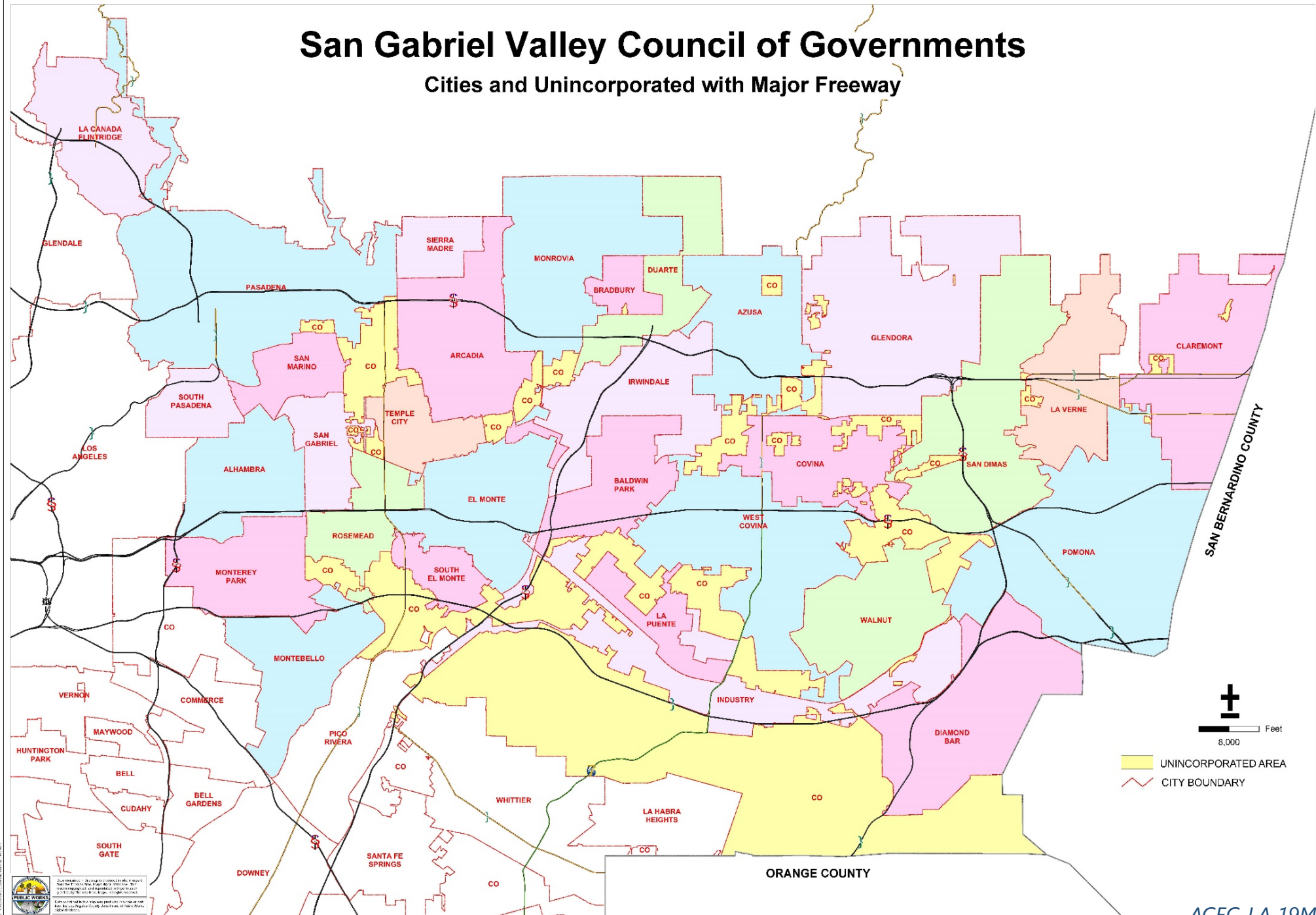


# Los Angeles County Subregions



# San Gabriel Valley Council of Governments

## Cities and Unincorporated with Major Freeway



# Key Infrastructure Projects and Programs in SGVCOG

- The Alameda Corridor East (ACE) Grade Separation Projects
- Transportation Programs
- Water Resources
- Broadband Initiative
- Southern California Regional Energy Network (SoCalREN)
- Regional Housing Trust



# Alameda Corridor-East Project

Los Angeles County, CA



Alameda Corridor-East Project Area

# MAGNITUDE OF SGVCOG CAPITAL PROJECTS

*Approximately \$ 1,893 billions both completed and active projects as of FY21Q2*

## ACTIVE CAPITAL PROJECTS (\$ IN MILLIONS)

At-Grade Pomona	\$31.357
<b>Durfee Ave Grade Sep</b>	\$108.434
<b>Fairway Dr Grade Sep</b>	\$240.522
<b>Fullerton Rd Grade Sep</b>	\$159.526
<b>Montebello Blvd. Grade Sep</b>	\$179.954
Turnbull Canyon	\$83.760
Maple Ave Ped Bridge	\$25.470
Montebello At-Grade Improvements	\$3.046

## COMPLETED ACE PROJECTS SINCE 1998 (\$ IN MILLIONS)

Baldwin Ave.	\$70.400
Brea Canyon Rd.	\$73.900
Safety Crossings/IRRIS	\$34.200
East End/Reservoir St.	\$79.000
Hamilton Blvd.	\$1.800
Nogales St. (Alhambra)	\$49.800
Nogales St. (Los Angeles County)	\$120.772
Ramona Ave.	\$53.100
Sunset Ave.	\$93.900
Puente Ave.	\$95.704
San Gabriel Trench	\$293.670
Temple Ave.	\$94.708

# Durfee Avenue Grade Separation (City of Pico Rivera)

- Construction Contract awarded in January 2019
- Construction is more than 50% Complete.
- Major miles reached in March 2021
- Complete Phase 1 of Bridge
- Cut-over of permanent UPRR Tracks onto Phase 1 of Bridge
- Construction anticipated to be completed June 2022



SGVCOG



# Fairway Drive Grade Separation (City of Industry)

- Construction at 70%
- Construction anticipated to be completed March 2023



# Fullerton Road Grade Separation (City of Industry)

- Construction at 39%
- Negotiation underway for a new construction contract
- Anticipated new completion in winter 2023-2024



# Montebello Corridor (City of Montebello)

- Three components:
    1. **Montebello Blvd Grade Sep – final design phase**
    2. **Maple Ave Pedestrian Bridge**
    3. **Montebello At-Grade Improvements**
  - Rail crossing safety work and Montebello Blvd underpass to begin construction in 2022\*
  - Begin constructing the pedestrian bridge in 2023\*
- \* Subject to full funding availability



# State Route 57/60 Confluence Chokepoint Relief Program (SR57/SR60 Interchange Improvements Project)

- Completed 95% design (by Metro)
- Begin Golf Course Construction in August 2021
- Begin freeway improvements in late 2022



# Additional SGVCOG-Led Capital Projects & Programs

- Metro Measure M Multi-Year Subregional Program Management (Planning)
- San Gabriel Valley Transit Study (Planning)
- Feasibility Study for the Regional VMT Mitigation Fee Structure Program (Planning)
- State Route 57/60 Confluence Chokepoint Relief Program (Construction)
- I605/Valley Blvd Improvements (Construction)
- At-Grade Safety Improvements in Pomona (Design/Construction)
- La Verne Gold Line Station Pedestrian Bridge (Design)
- San Gabriel Valley Regional Bikeshare Program (Active Transportation)
- Rio Hondo Load Reduction Study (Design)
- ITS?



# Contact Information

**Eric C. Shen, PE, PTP**

**Director of Capital Projects/Chief Engineer  
San Gabriel Valley Council of Governments**

**[eshen@sgvcog.org](mailto:eshen@sgvcog.org)**

**(626) 698-9926**

