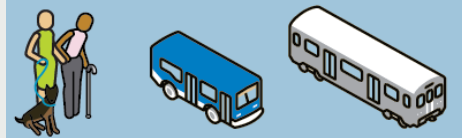
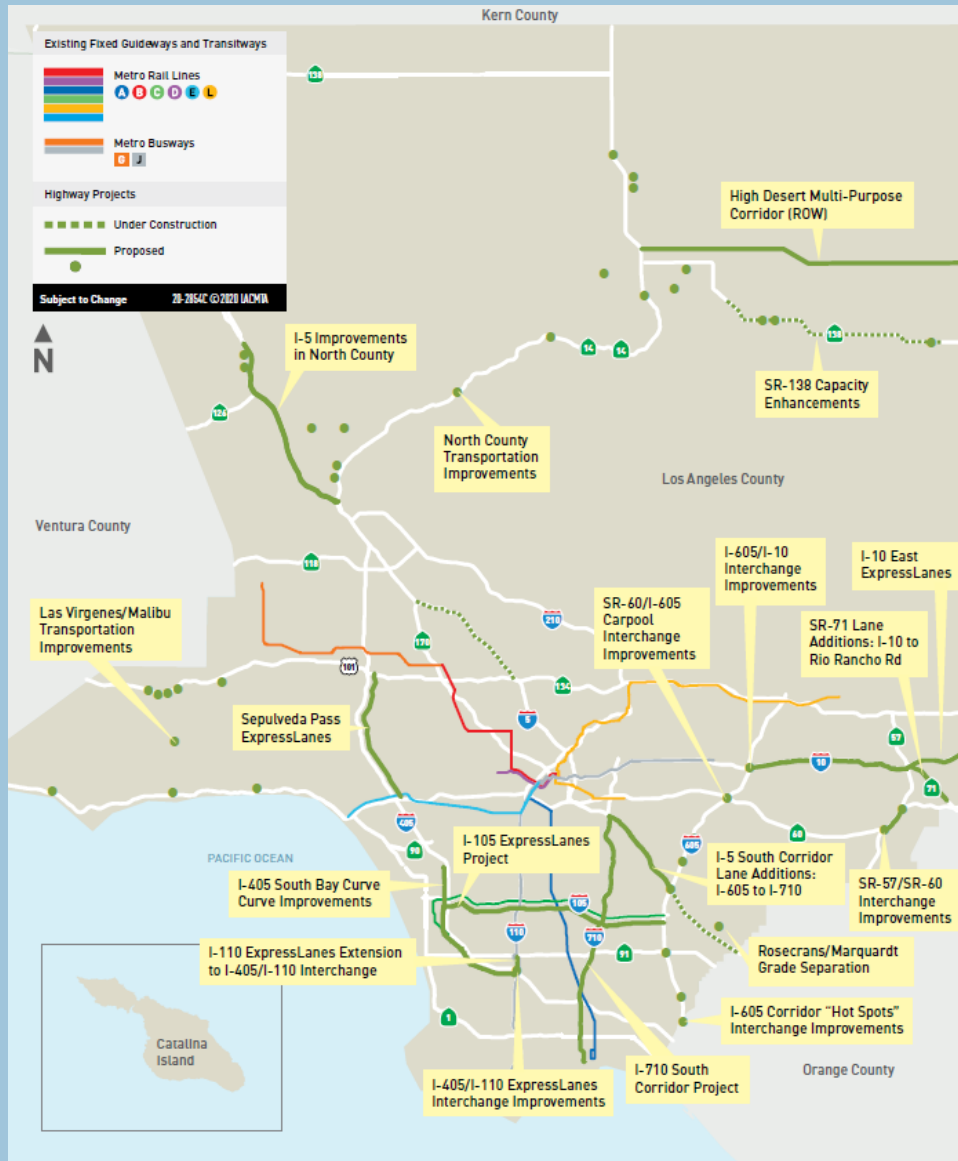


Agenda

- Measures R & M
- Portfolio of Highway Projects
- Multiple Goals for Roads & Highways
- Highway Program Funds Eligibility Updates
- SB 743/ VMT Mitigation Program & Timeline
- Project Updates
- 710 Task Force
- Intelligent Transportation Systems (ITS)
- Upcoming Opportunities
- 2028 Mobility Concept Plan



Measure R & M



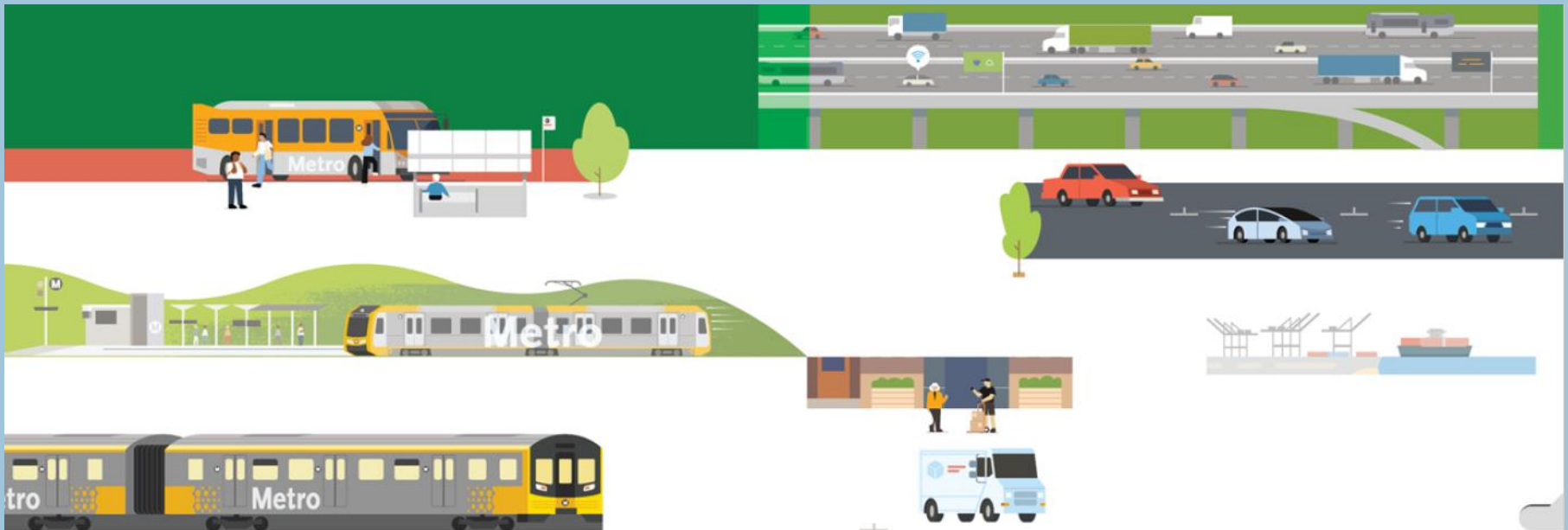
Metro Highway Projects

1. Major corridor-level capacity enhancements
 - I-710 Corridor Project, I-605 Corridor Improvement Project
2. Large scale State highway improvements
 - SR-57/SR-60 Interchange Improvements, I-5 North HOV Lanes in North County
3. Medium/small size State highway operational improvements
 - I-605, I-405, SR-91 Hot Spots; I-710 Early Action Projects; I-710/I-105 Integrated Corridor Management
4. Small-scale local operational improvements



Multiple Goals for Roads & Highways

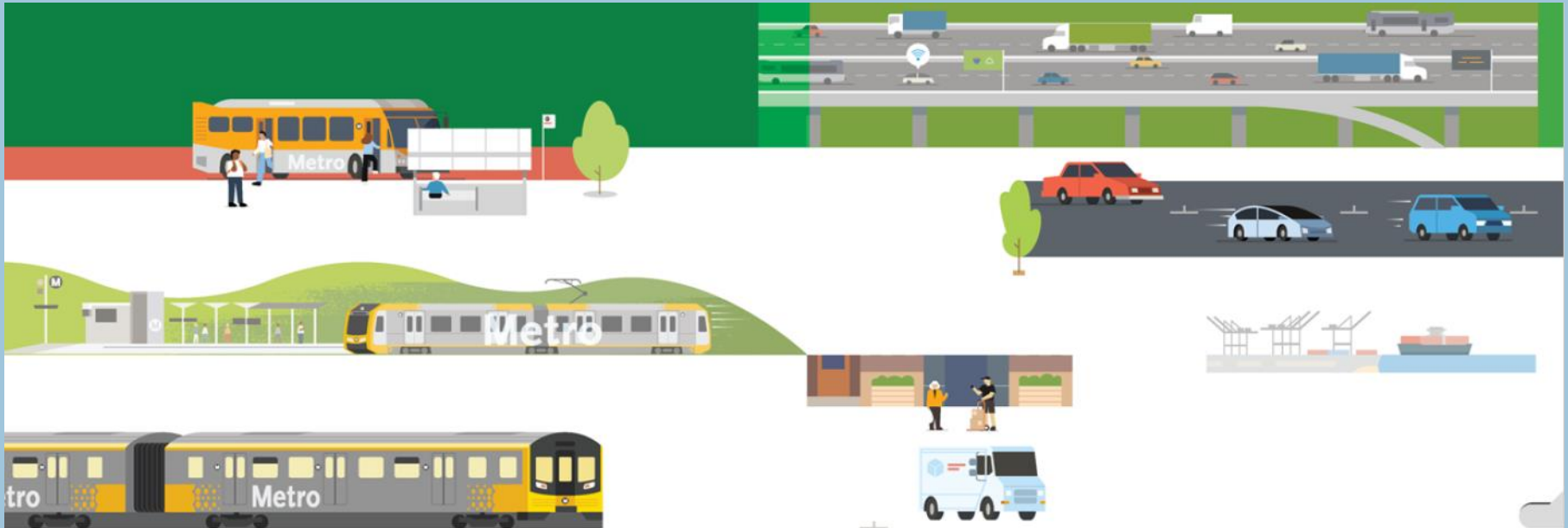
- Congestion management
- Active Transportation
- Goods movement
- Public health & reduction of GHG emissions
- Equity



Multiple Goals for Roads & Highways

Strategic priorities: Improve mobility, connectivity, accessibility, safety, equity and sustainability. Putting these priorities in practice will mean:

- Easing Congestion through safety & operational improvements
- Consideration of all modes and equity during highway planning
- Improvement in travel time reliability
- Implementation of complete streets/multimodal road improvements



Highway Program Funds Eligibility Updates

- June 2021 – Board Adopted Updated Guidelines to allow Active Transportation, Complete Streets, TSM/TDM projects to be funded as components of projects or as stand-alone projects.
- February 2022 – Clarification on eligible uses for 710 North MIPs to include:
 - Active Transportation
 - Bus-supportive infrastructure



SB 743

- Under CEQA, transportation impacts of new projects must look at VMT instead of LOS
- VMT measures how much actual auto travel (additional miles driven) a proposed project would create
- If the project adds excessive car travel, the project may cause a significant transportation impact
- Applies to both land use and transportation projects

Source: VMT Policy Fact Sheet, City of Campbell, CA



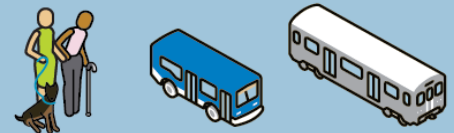
VMT Mitigation Program Goals

Analyze

- Metro's highway improvement projects listed in Metro's Expenditure Plans/Ordinances
- Regulatory and VMT quantification policy guidance
- Existing tools for use in quantifying highway improvement project-generated VMT

Develop

- A preferred quantitative methodology for VMT-inducing projects on the SHS
- Criteria for evaluating, validating, and prioritizing potential VMT mitigation options
- VMT mitigation quantification tool



VMT Mitigation Program Goals

Identify

- Eligible Metro and/or Countywide programs that demonstrate CEQA-defensible VMT reductions
- Prioritization of mitigation options
- Potential benefits of VMT mitigation efforts to vulnerable communities (disadvantaged communities and Metro-defined EFCs) using Metro Equity Tool

Deploy

- A CEQA-defensible VMT Mitigation Program for the selection of the most effective forms of mitigation for different types of VMT-inducing projects on the SHS
- VMT reduction strategies will demonstrate proportionality between condition and adverse impacts of project

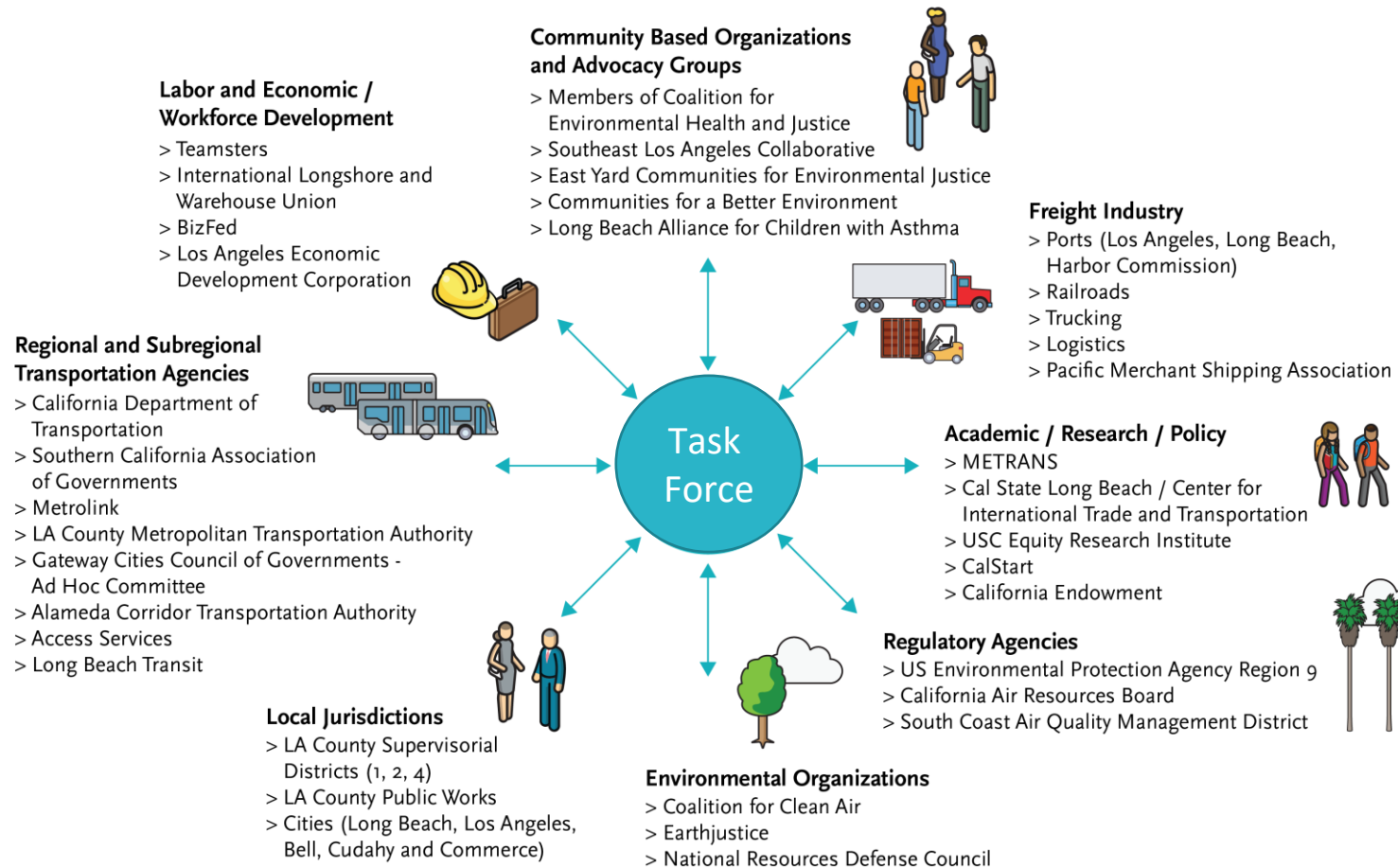


Project Updates

- | | |
|---|------------------------------------|
| • <i>I-5 HOV Lanes; SR-14 to Parker Road</i> | <i>Construction</i> |
| • <i>I-605/South Street Interchange Improvements</i> | <i>Pre-Bid</i> |
| • <i>I-710 Early Action Projects (Soundwalls)</i> | <i>PS&E & Construction</i> |
| • <i>SR-57/SR-60 Interchange Improvements</i> | <i>PS&E</i> |
| • <i>SR-91 WB between Shoemaker and I-605</i> | <i>PS&E</i> |
| • <i>SR-72, Whittier Blvd., @Painter and S.F. Springs Rd.</i> | <i>PS&E</i> |
| • <i>SR-91, Eastbound, Atlantic to Cherry</i> | <i>PS&E</i> |
| • <i>SR-91/Central Avenue Improvements</i> | <i>PS&E</i> |
| • <i>I-605/Beverly Blvd. Interchange Improvements</i> | <i>PS&E</i> |
| • <i>I-605/Valley Blvd. Interchange Improvements</i> | <i>PS&E</i> |
| • <i>I-405, I-105 to Artesia Blvd.</i> | <i>PS&E</i> |
| • <i>I-405, I-110 to Wilmington</i> | <i>PAED</i> |
| • <i>I-605 Corridor Between I-105 and I-10 Improvements</i> | <i>PAED</i> |
| • <i>I-710 Corridor Improvements</i> | <i>Planning</i> |
| • <i>Various intersection improvement projects</i> | <i>PAED/PS&E</i> |



I-710 Task Force



Intelligent Transportation Systems

- Signal Synchronization and Bus Speed Improvements
- Transit Signal Priority
- Integrated Corridor Management
- Goods Movement Technology
- Connected Vehicles
- Performance Measurement
- Regional ITS Architecture
- All other Highway Related ITS



Upcoming Opportunities

- On-Call Services – May 2022
- SR-91/I-605 Hot Spots
 - I-605 Beverly Construction – Fall 2022
- I-405 South Bay Improvements
 - I-110 to Wilmington PAED – Fall 2022
- I-710 Early Action Project(s)
- Other Subregional Priority Projects



2028 Mobility Concept Plan

- Motion 42
- Goals
 - Mobility / Access
 - Legacy
 - Catalyst
- Work to Date
 - Initial Project List
- Next Steps
 - Stakeholder Outreach
 - Mobility Partner Coordination
 - Prioritized Project List



Q&A

Ernesto Chaves, Interim Sr. Executive Officer: ChavesE@metro.net

