



ACEC

California

Los Angeles County Chapter

Capital Improvement Program Presentation
Dina Aryan-Zahlan—Chief Harbor Engineer

June 14, 2023



THE PORT
OF LOS ANGELES

SAN PEDRO BAY PORT COMPLEX



Port of Los Angeles

Port of Long Beach

Long Beach

SAN PEDRO BAY PORT COMPLEX



Calendar Year 2022

Port of Los Angeles

San Pedro Bay Port Complex (Port of Los Angeles + Port of Long Beach)

Ranked #17 in the world

Ranked #9 in the world

124,000 jobs in Los Angeles (1 in 15)

168,000 jobs in Los Angeles/Long Beach
(1 in 12)

446,000 jobs in five-county region (1 in 19)

883,000 jobs in five-county region (1 in 9)

1,349,000 jobs throughout the U.S. (1 in 117)

2,534,000 jobs throughout the U.S. (1 in 62)

40% of West Coast's market share

75% of West Coast's market share

16% of United States' market share

29% of United States' market share

THE PORT OF LOS ANGELES



THE PORT OF LOS ANGELES

FACTS & FIGURES



7,500 Acres 4,300 land / 3,200 water	43 Miles of waterfront	-53' Main Channel water depth
25 Cargo Terminals including 7 container terminals	82 ship-to-shore container cranes	116 Miles on-dock rail and sea rail yards

TRADE VOLUME (CY 2022)	Containers (TEUs) 9.9 million	Automobiles (Units) 112,044
Cruise Ship Calls/Passengers 229/995,819	Vessel Arrivals (All Types) 1,819	


TOP 5 IMPORTS (CY 2022)	
Furniture	683,789 TEUs
Auto Parts	359,795 TEUs
Apparel	269,190 TEUs
Plastics	267,711 TEUs
Footwear	262,910 TEUs

TOP 5 EXPORTS (CY 2022)	
Pet/Animal Feed	181,073 TEUs
Paper/Wastepaper	146,613 TEUs
Soybeans	104,057 TEUs
Fabrics/Raw Cotton	83,076 TEUs
Recycled Metal	62,157 TEUs

TOP 5 TRADING PARTNERS (CY 2022)

- CHINA/HONG KONG \$134 BILLION**
- JAPAN \$38 BILLION**
- VIETNAM \$33 BILLION**
- TAIWAN \$20 BILLION**
- SOUTH KOREA \$16 BILLION**

TOP 5 TRADE ROUTES (CY 2022)




- Northeast Asia (71%)
- Southeast Asia (24%)
- India Sub-continent (2%)
- Northern Europe (2%)
- Mexico/Central America (0.3%)

FINANCES (FY 2021/2022)

Cargo Value	\$311 billion (CY22)
Adopted Budget	\$1.7 billion
Operating Revenue	\$628 million
Operating Expenses	\$255 million
Capital Improvement Program	\$90 million

ECONOMIC IMPACTS (CY 2022)

Port of Los Angeles




40% West Coast | **16%** of US market share

- Ranked #17 in the world
- 124,000 (1 in 15) jobs in Los Angeles
- 446,000 (1 in 19) jobs in five-county region
- 1,349,000 (1 in 117) jobs throughout the U.S.

San Pedro Bay Port Complex

Port of Los Angeles + Port of Long Beach



75% West Coast | **29%** of US market share

- Ranked #9 in the world
- 168,000 (1 in 12) jobs in Los Angeles/Long Beach
- 883,000 (1 in 9) jobs in five-county region
- 2,534,000 (1 in 62) jobs throughout the U.S.

portoflosangeles.org
Comparison data for the past three years is available on the Port of Los Angeles website.

2023-0014

- A department of the City of Los Angeles (Los Angeles Harbor Department)
- Governed by the Los Angeles Board of Harbor Commissioner
- Founded December 9, 1907
- Ranked #1 container port in Western Hemisphere for 23 consecutive years (2000-2022)
- Handled 9.9 million TEUs in CY 2022 (second highest year on record); 10.7 million TEUs in CY 2021--highest year on record)

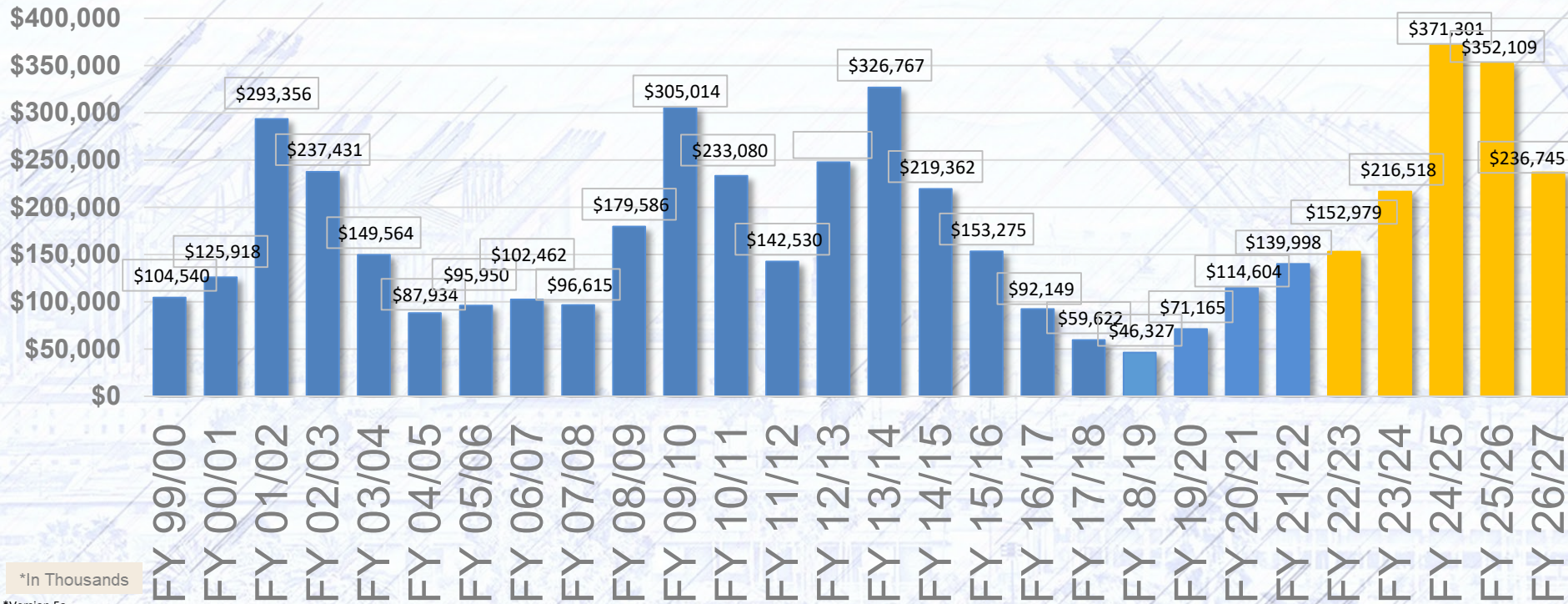
Capital Program



Capital Improvement Program 1999 - 2027



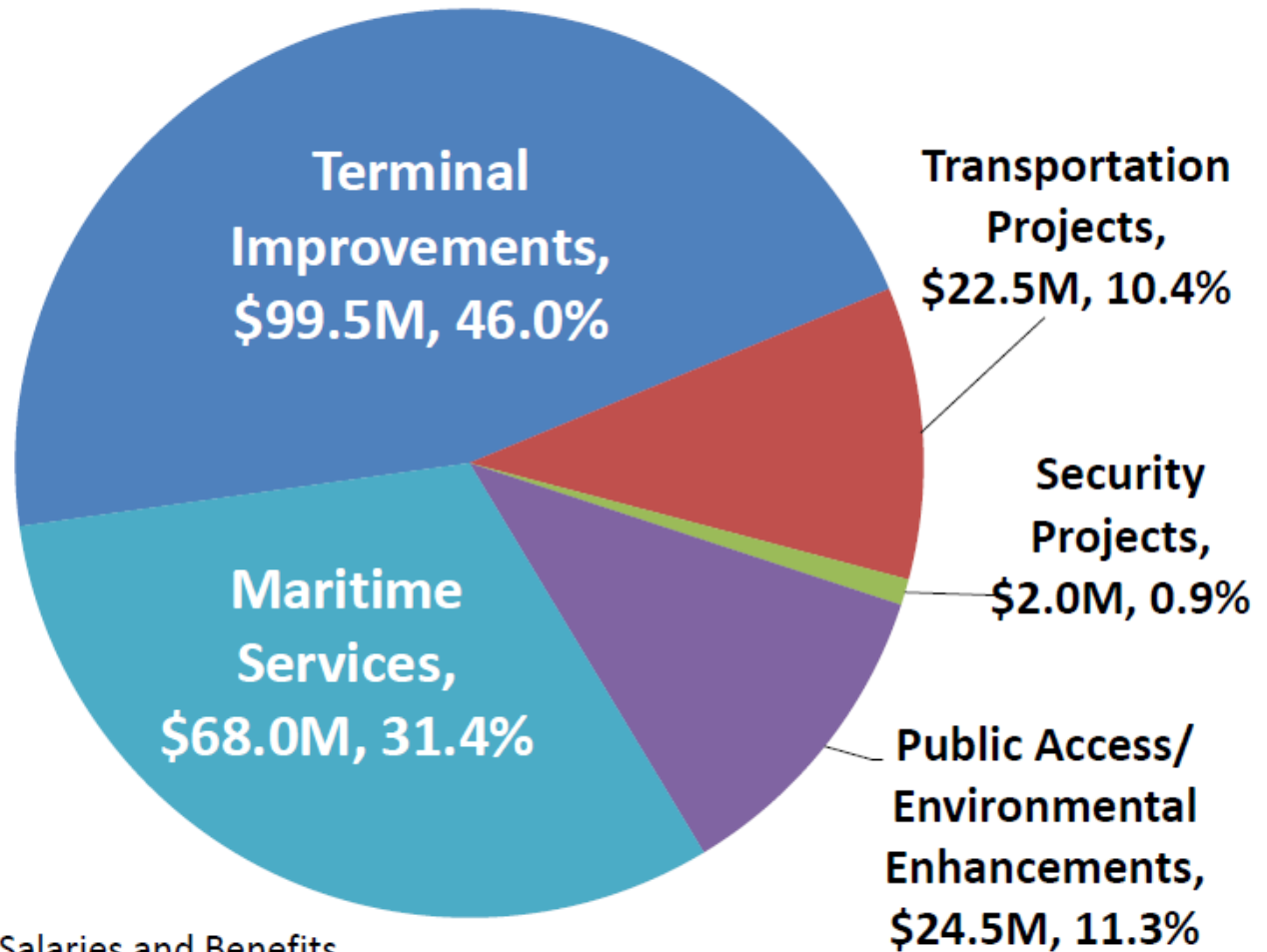
More than \$4B invested in our CIP over 25+ year period



*In Thousands

*Version 5a

Proposed FY 2023/24 Capital Improvement Program (CIP) Budget \$216.5M



*Includes Salaries and Benefits

FY 23/24--Construction Projects

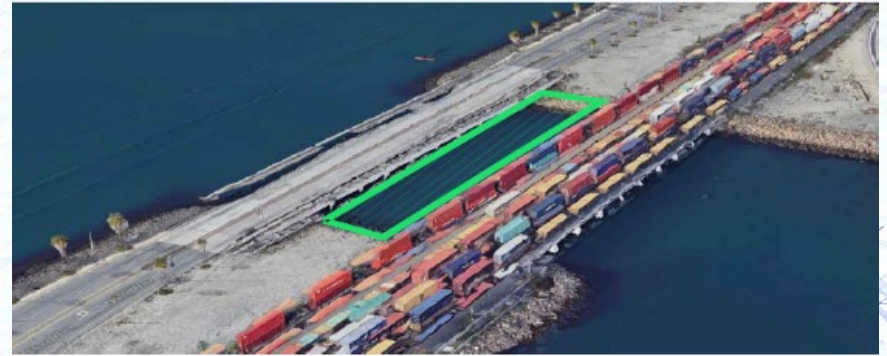
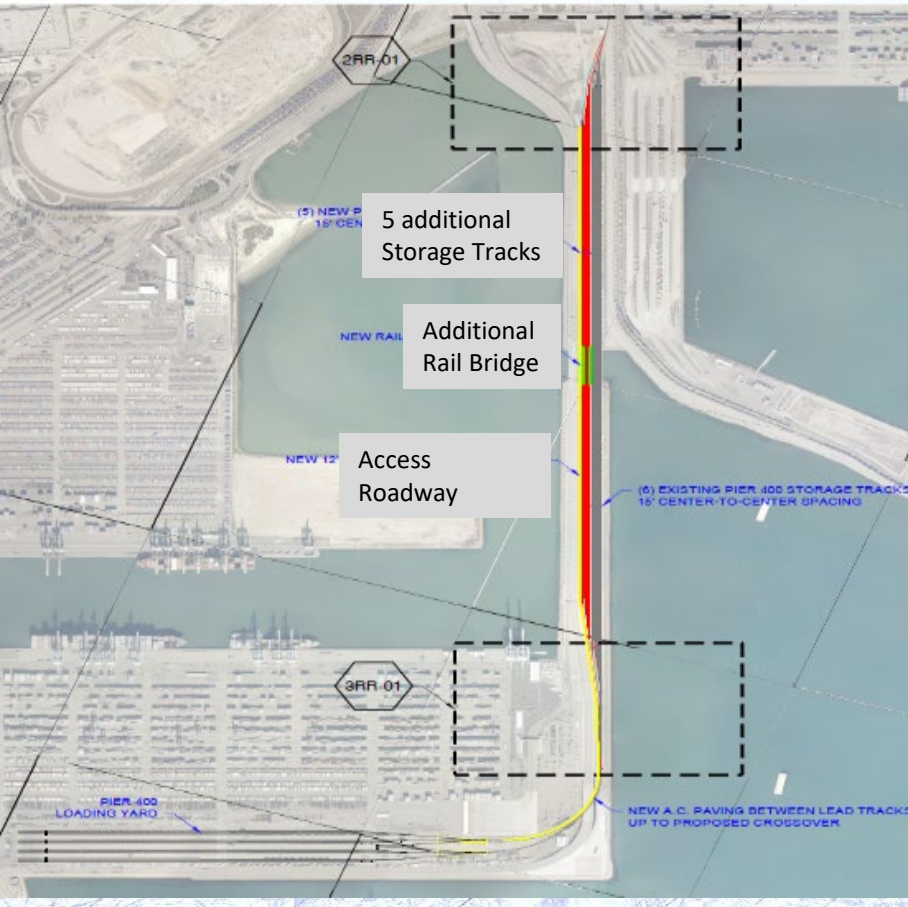


Wilmington Waterfront Promenade



- **Project Cost: \$71.4M**
- **Construction Completion: Fall 2023**
- **\$1.2M in FY23/24 CIP**

Pier 400 Corridor Storage Track Expansion

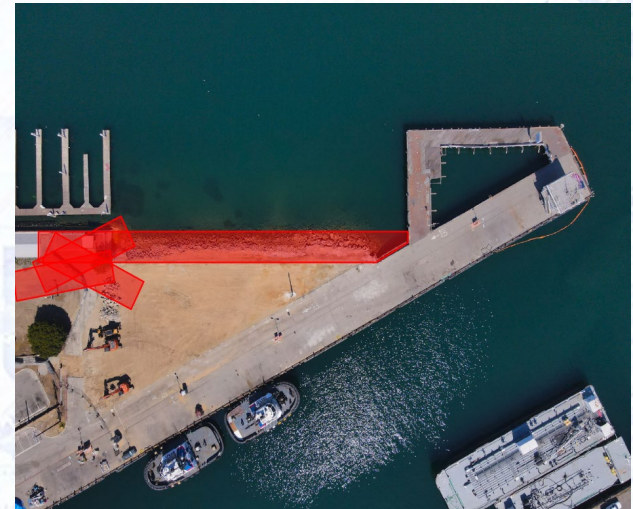


BRIDGE OBLIQUE VIEW

- **Project Cost: \$73.20M**
- **Const: Feb 2022 to May 2024**
- **Grant Funding: \$21.6M**
- **\$29.6M in FY 23/24 CIP**

San Pedro Waterfront Berths 74-83 Promenade – Phase II & Clean-Up

- **Project Cost: \$35 M**
- **Const: June 2023 – Dec 2024**
- **\$10.24M in FY23/24 CIP***

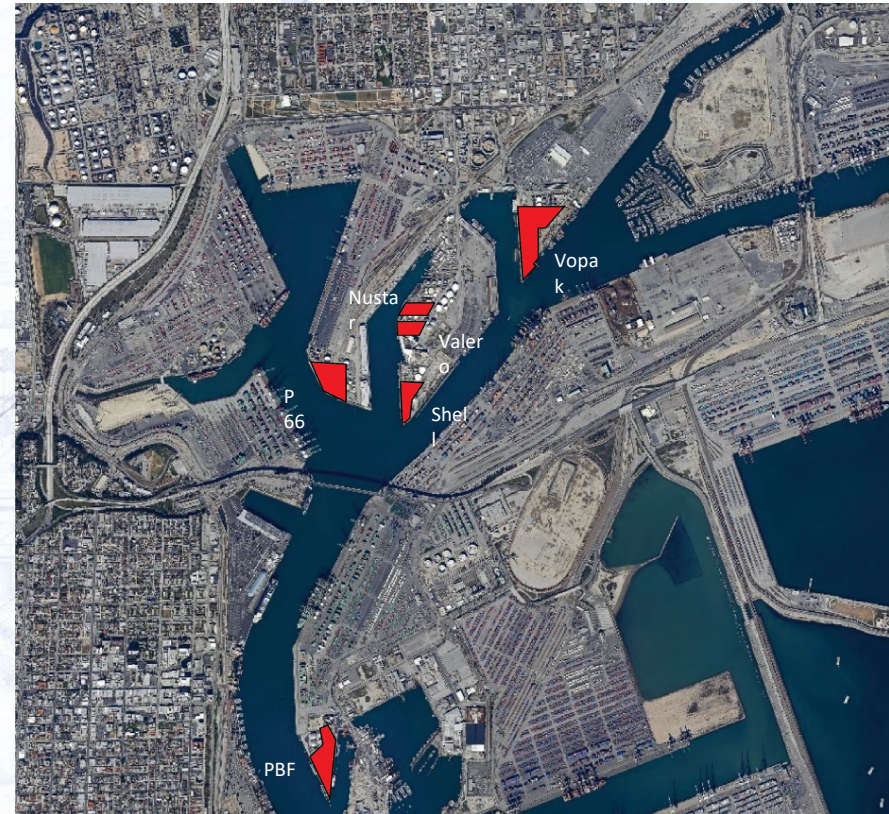


* Cost may change based on bid results

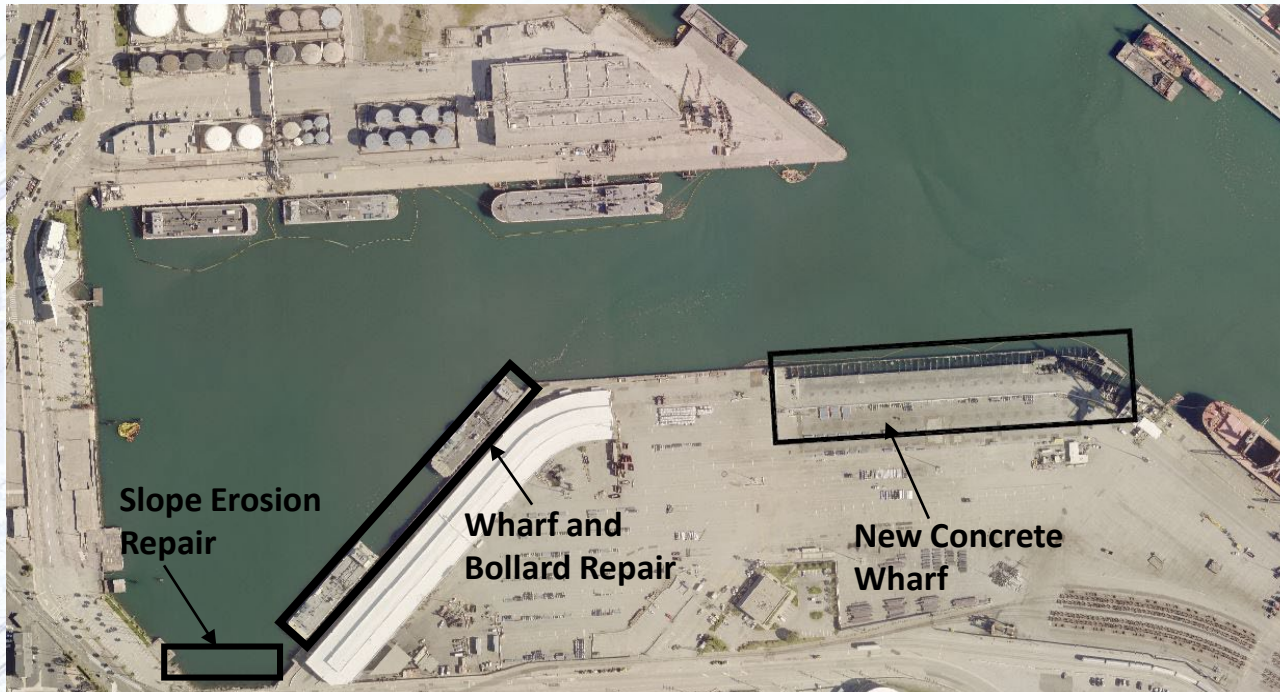
MOTEMS Program (Ongoing)

- Berths 167-169 (Shell) \$44.8M
- *Const: July 2021 – January 2024*
- \$4.4M in FY 23/24 CIP

- Berths 238-239 (PBF) \$35M
- *Const: October 2023 – October 2026*
- \$13.3M in FY 23/24 CIP



Berths 177-182 Marine Improvements



- **Project Cost: \$14.4 M**
- **Const: Aug. 2023 – July 2024**
- **\$10.8 M in FY 23/24 CIP**

Terminal Island Demolition Projects

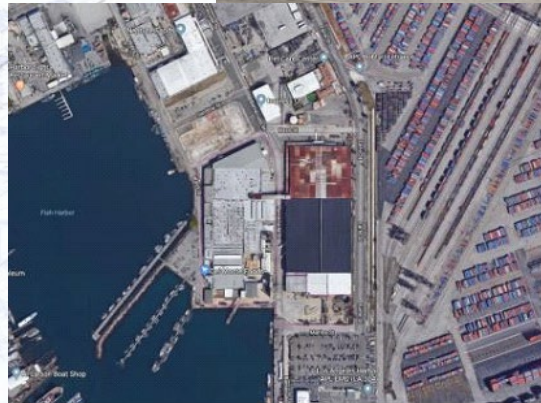
Projects:

- Southwest Marine Administration Building Demolition
- Starkist Demolition
- South Seaside Avenue Storm Drain
- 1025 Seaside Avenue Demolition

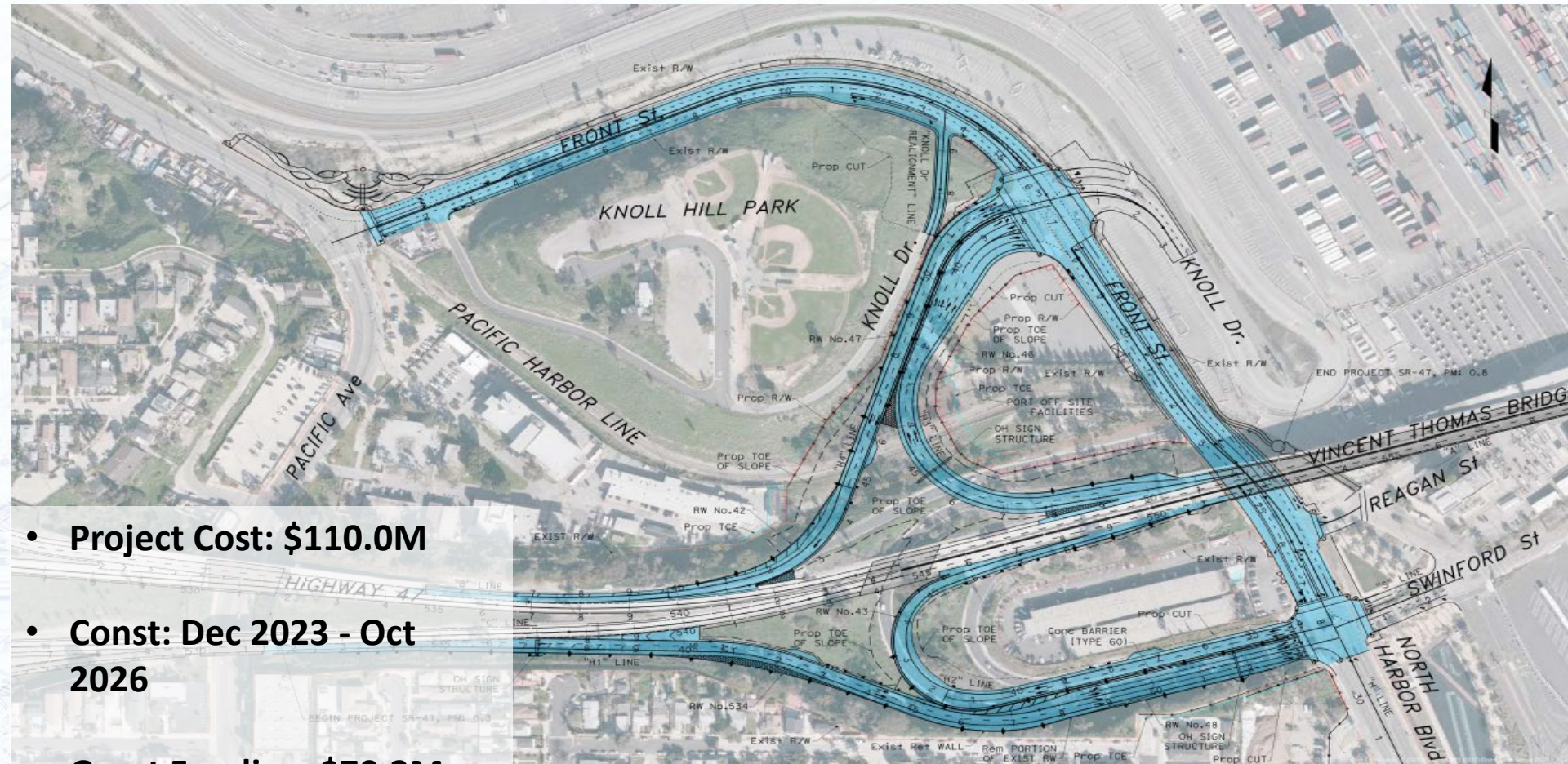
• **Project Cost: \$18.2 M**

• **Const: Dec. 2023 – Nov. 2024**

\$11.2M in FY 23/24 CIP



State Route 47/Vincent Thomas Bridge & Front St./Harbor Blvd. Interchange Reconfiguration



- **Project Cost: \$110.0M**
- **Const: Dec 2023 - Oct 2026**
- **Grant Funding: \$70.2M**
- **\$19.1M in FY 23/24 CIP**

POLA On-Call Personal Service Agreements (Dec. 2022-Dec. 2025)

Personal Service Agreements (7)—3 year Agreements at \$5 M:

- AECOM
- DR Consultants
- Jacobs
- KPFF
- Mark Thomas & Co
- Moffatt & Nichol
- WSP

Request for Proposal/Personal Service Agreements—Individual Projects

- POLA/POLB Goods Movement Training Center
- Maritime Support Facility & Grade Separation (2 projects)
- Navy Way/Seaside Interchange Improvements
- Digitalization of Records for Construction Division

Wilmington Waterfront Avalon Pedestrian Bridge and Promenade Gateway



- **Project Cost: \$65.0M**
- **Const: Nov 2024 – Spring 2027**
- **\$1.4M in FY23/24 CIP**

Berth 306 Container Wharf



- **1250 LF New Container Wharf Berth 306**
- **300 LF Upgrade at Berth 305**
- **2.2 Acre Backland** *safety fencing, protection barriers, removals, drainage, grading and paving*
- **Electrical Infrastructure**
AMP, New Substation, Upgrade STS Cranes to 12.47KV power

- Project Cost: \$256M
- Const.: Mar 2024 – Aug 2025
- Grant Funding: TBD
- **\$9.2 M in FY 23/24 CIP**

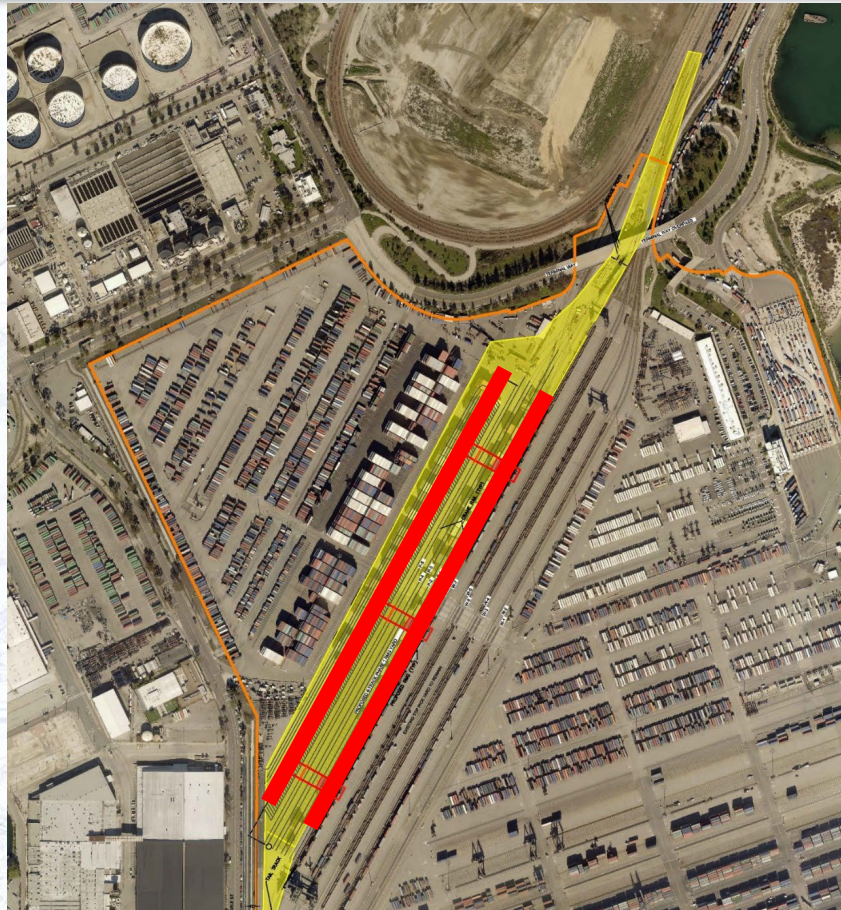
Berths 302-305 On-Dock Rail Expansion



- **17,500 New Track Feet**
5 New Tracks, Reuse 3 existing tracks, new tail track
- **Expanded Throat**
3 Track Throat, 13 New Turnouts
- **Rail Signal Improvements**
Train in Motion system, power derrails, blue flag protection, track bumpers

- Project Cost: \$52.4M
- Const: Dec. 2024 – Dec. 2026
- Grant Funding: \$37.4M
- **\$11.4 M in FY 23/24 CIP**

Berths 302-305 RMG Crane Rail and Foundation



- **2,300 lf 145' Gage New Crane Rail** *5,000lf continuous grade beam foundation*

- **Electrical Infrastructure** *to operate 5 – 145ft widespan RMG cranes, including substation modification, new power distribution, and communication conduit*

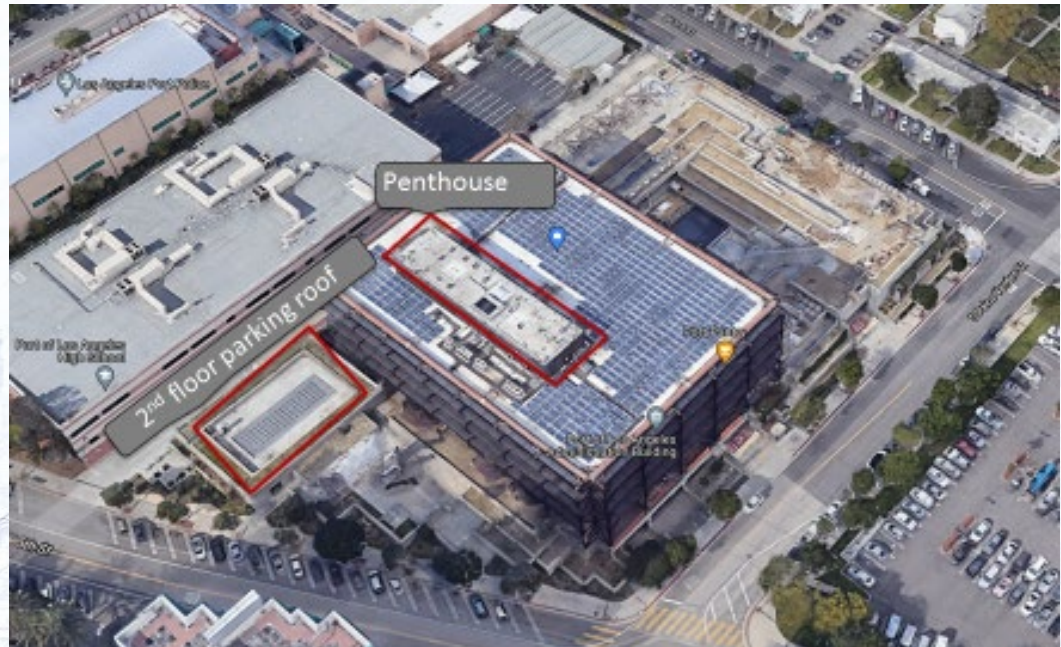
- **Civil Improvements** *safety fencing, protection barriers, removals, drainage, grading and paving*

- Project Cost: \$38.7M
- Const: Dec. 2024 – Dec 2026
- **\$2.9M in FY 23/24 CIP**

Harbor Administration Building HVAC Replacement



- City Council Motion (CF 21-1039)
- Building De-carbonization Work Plan



- **Project Cost: \$13.95 M**
- **Const: Sept 2024 – Sept 2025**
- **\$400K in FY 23/24 CIP**

208 East 22nd St. Parking Lot Improvements



- **Develop and Redevelop** **approx 17.5 acres** for public parking for approx. 1,900 parking stalls
 - **Improvements** include demolition, removals, drainage, AC paving, striping, driveway modifications, site lighting, site security, fencing, security cameras, and parking kiosks
-
- Project Cost: \$20.8M
 - Const: Jan 2025 – Sept 2025
 - **\$662K in FY 23/24 CIP**

POLA-POLB Goods Movement Workforce Training Facility



- Total Project Cost: \$150M
- Const: Feb 2027 – Feb 2029
- State Funding: \$110M
- \$2.75M in FY23/24 CIP

RFP SUBMITAL DATE: AUGUST 3, 2023

Terminal Island Maritime Support Facility



- **Develop approx 80 acres** for cargo support facility
- **Improvements** include removals, drainage, utilities, paving, fire protection, water, electrical, site lighting, roadability canopy, restrooms, guard booths, and 1,000' access roadway

- Project Cost: \$194.63M
- Const.: Sept 2025 – Aug 2027
- **\$4M in FY 23/24 CIP**

RFP: JUNE/JULY 2023

Maritime Support Facility Access/TI Rail System Grade Separation



- **Four-lane Grade Separated Roadway** over POLA mainline rail tracks connecting Terminal Island, Ferry St, and P300 to the TI Maritime Support Facility
- **Structure** 2,000ft roadway structure, foundation and retaining wall
- **Intersection Modifications** traffic signal re-signalizations

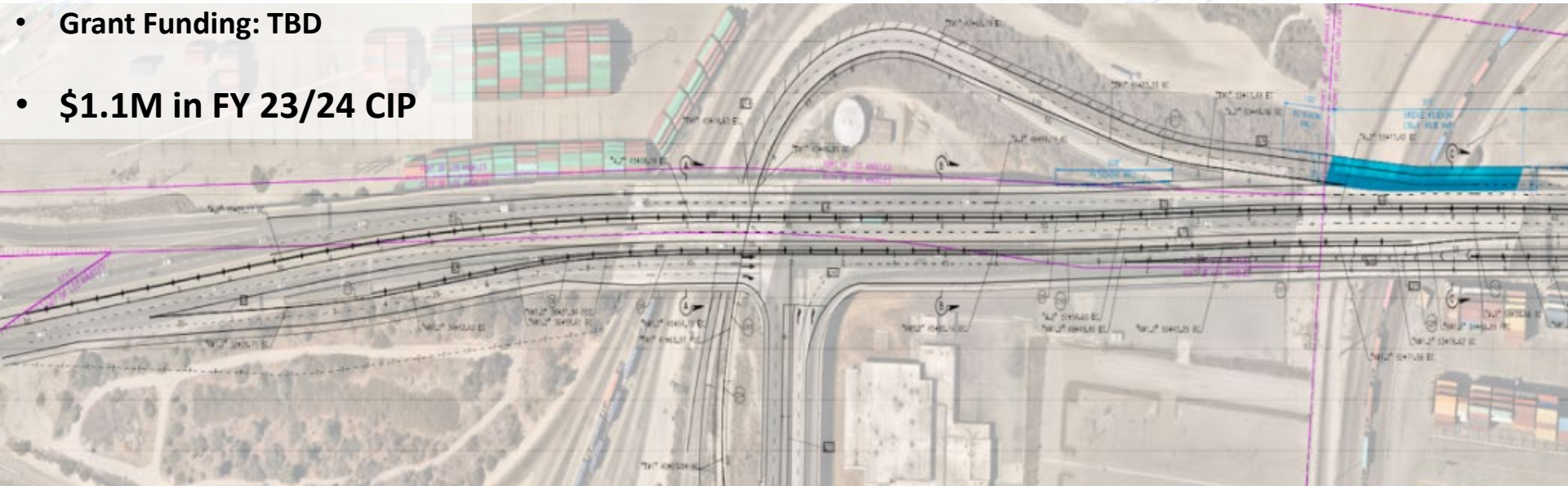
- Project Cost: \$39.2M
- Const.: Oct 2024 – June 2026
- Grant Funding: \$35M
- **\$915K in FY 23/24 CIP**

RFP: JUNE/JULY 2023

Navy Way and Seaside Ave. Interchange Improvements



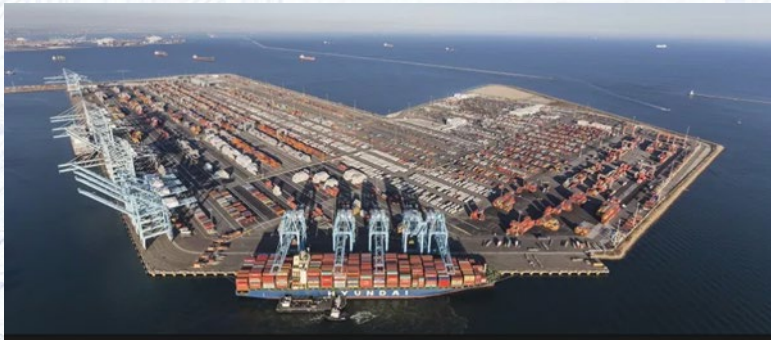
- **Project Cost: \$65.7M**
- **Const: Jan 2026 - June 2028**
- **Grant Funding: TBD**
- **\$1.1M in FY 23/24 CIP**



RFP: Aug/Sept 2023

Digitalization of Records

- Construction Division—Test Lab Records
- All Archived Photos (100,000+)
- RFP June/July 2023



RFP: JUNE/JULY 2023



Berths 177-182 Development \$10.8M

MOTEMS Improvements \$17.7M

SR 47 Transportation/Beautification Improvements \$23.1M

Terminal Island Maritime Support Facility \$4M

Maritime Support Facility Access/ TI Rail System Grade Sep \$915K

Harbor Administration Bldg - HVAC Replacement \$400K

San Pedro Waterfront Promenade Phase II & Clean Up \$10.2M

208 East 22nd St Parking Lot Improvements \$662K

Avalon Pedestrian Bridge and Gateway \$1.4 M

POLA-POLB Goods Movement Workforce Training Facility \$2.75 M

Wilmington Waterfront Promenade \$1.2M

Navy Way and Seaside Interchange \$1.1M

Pier 400 Corridor Storage Track Expansion \$29.6M

Terminal Island Demolition Projects \$11.2M

Berth 306 Container Wharf \$9.2M

Berths 302-306 Terminal Improvements \$14.3M



FY 2023/24 Capital Improvement Projects

- **POLA/POLB Workforce Training Center**
 - **Maritime Support Facility & Maritime Support Grade Separation (1 RFP for either 1 or 2 Project submittal)**
 - **Digitalization of Records--Construction Division**
 - **Navy Way/Seaside Interchange Improvements Project**
 - **Request for Proposals are available at:**
<https://www.portoflosangeles.org/business/contracting-opportunities/requests-for-proposals>
 - **Contract Documents are available at:**
<https://www.portoflosangeles.org/business/contracting-opportunities/construction-bids>
- In order to ensure the highest participation of SBE/VSBE/MBE/WBE/DVBEs, all bidders shall utilize the City's contracts management and opportunities database:
- **Regional Alliance Marketplace for Procurement (RAMP) at**
<http://www.rampla.org>

Thank You





Port of
LONG BEACH
THE PORT OF CHOICE

Capital Improvement Program

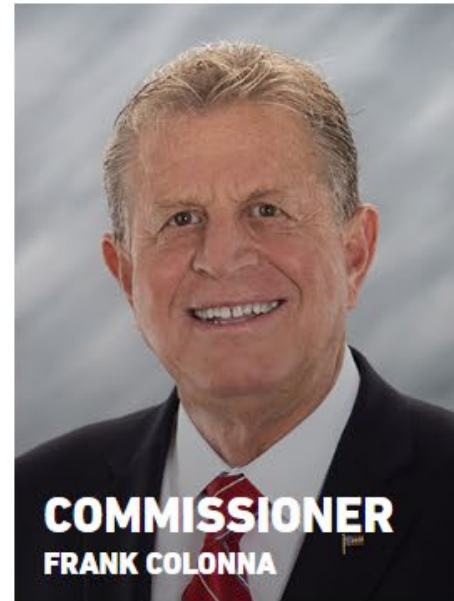
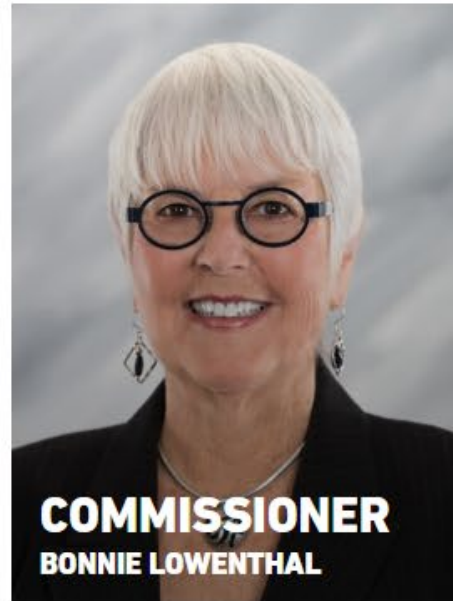
ACEC Los Angeles County Chapter

**Presented by: Tasha Higgins, Director, Program
Management Division**

June 14, 2023



Port of
LONG BEACH
THE PORT OF CHOICE



Tasha Higgins, PE, PMP

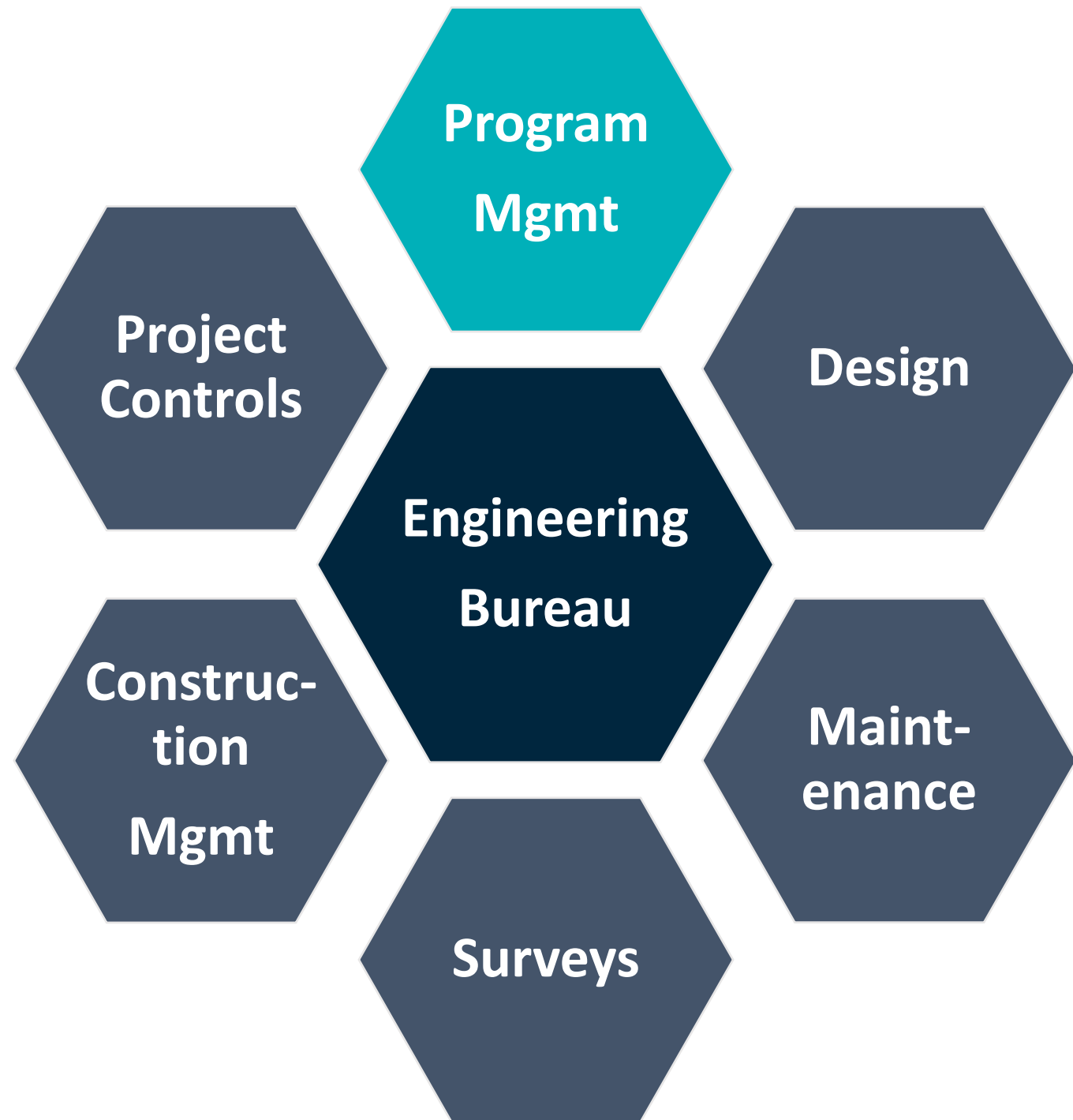
- Civil Engineer
 - Transportation and Construction Management
- Certified Project Manager
- UC Irvine Graduate – Zot! Zot! Zot!
- Biola University MBA
- 30 years of public works projects
 - 3 agencies
 - 3 private firms (including my own)
- Enjoy making Data-driven decisions
- 5 kids!!!



tasha.higgins@polb.com



Engineering Services Bureau





913



MILLION TEUS

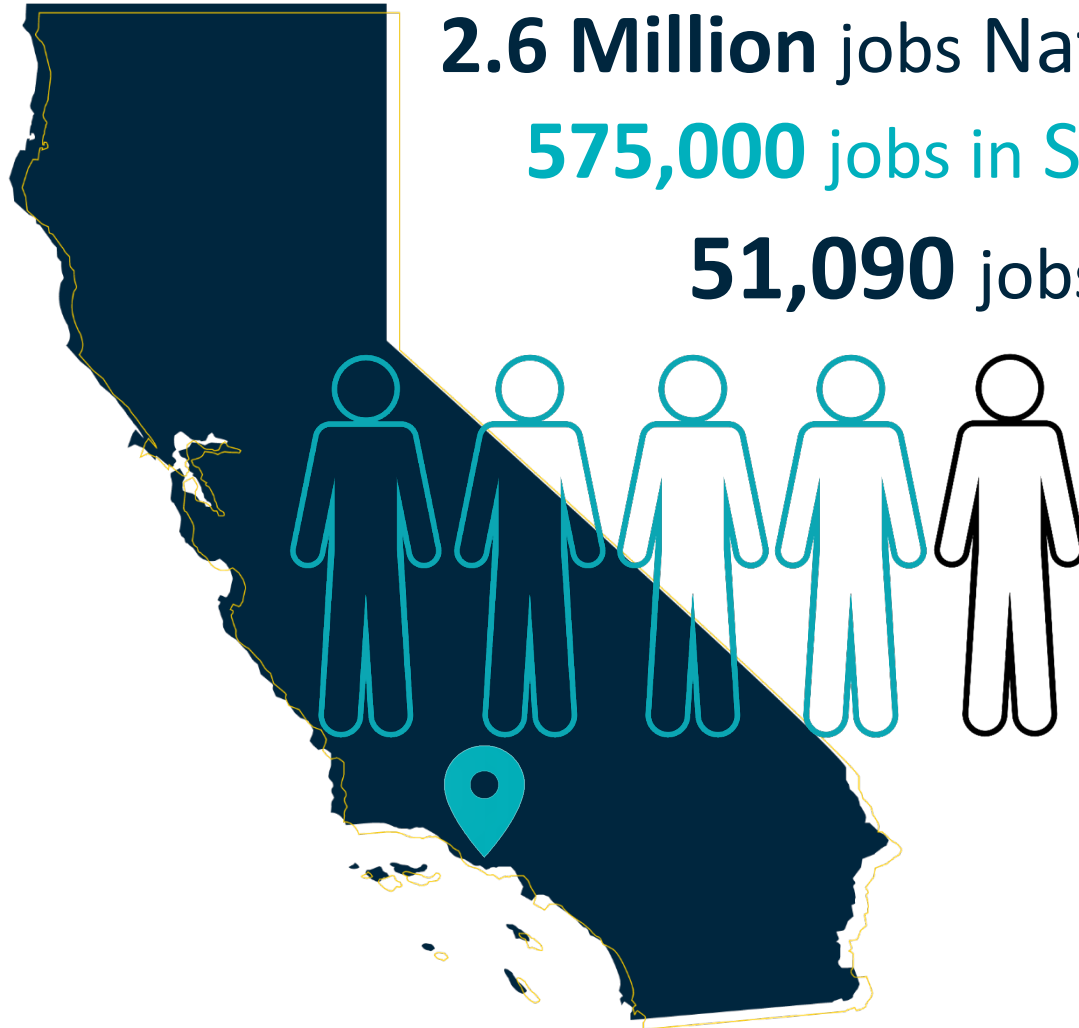


2.7 PERCENT

WE ARE THE GREEN PORT



WORKFORCE DEVELOPMENT



2.6 Million jobs Nationally

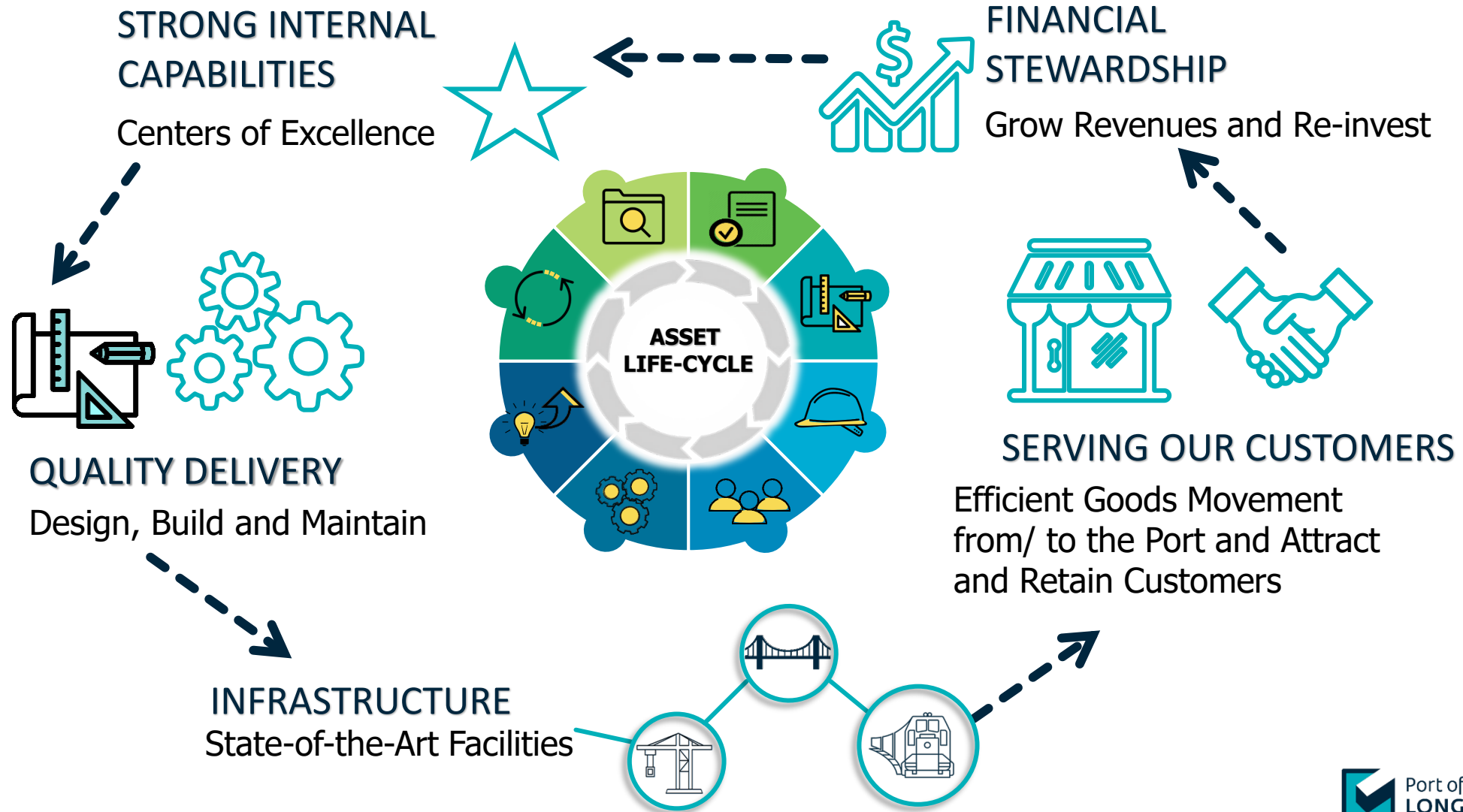
575,000 jobs in Southern California

51,090 jobs in Long Beach

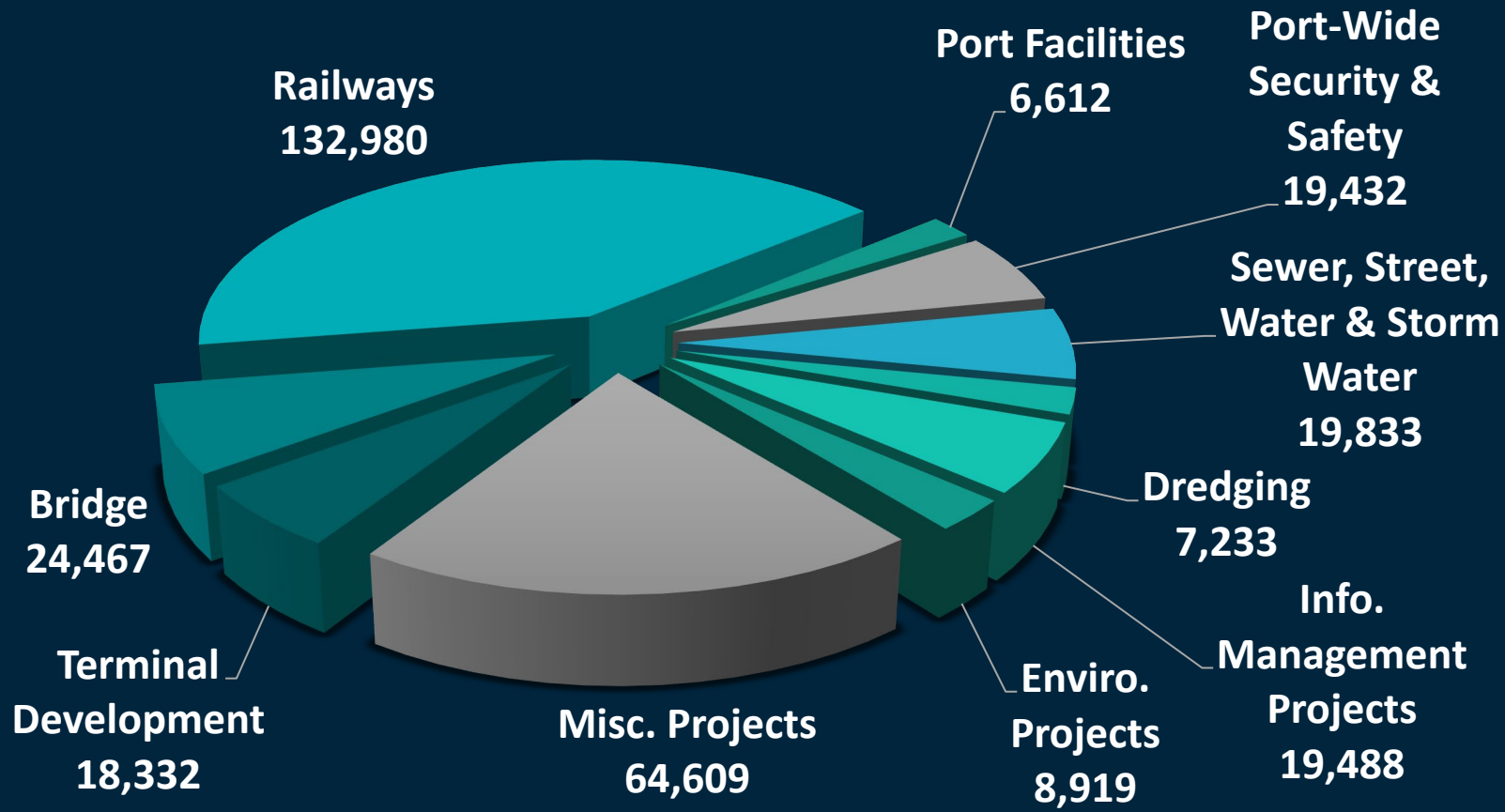
- *LA/OC Trades – Project Labor Agreements*
- *Goods Movement Training Center (w/ POLA)*
- *Long Beach Unified School District Programs*
- *Port’s Educational Programs*
- *Engineer’s Week (Middle School and High School)*


ENGINEERING PHILOSOPHY:

BUILD **SMART** TODAY for the **GREEN PORT OF THE FUTURE**



FY 2023 CAPITAL PROGRAM BUDGET \$322 MILLION



A large blue container ship is docked at a port. The ship is heavily loaded with colorful shipping containers. In the background, several large gantry cranes are visible, along with a smaller ship named 'CROWLEY'. The scene is set against a clear blue sky and dark water.

UNIQUE PROJECTS

PIER J BIKE AND PEDESTRIAN PATH




OCEAN BLVD CONNECTOR



MARK BIXBY BIKE AND PEDESTRIAN PATH



A large blue container ship is docked at a port. The ship is heavily loaded with colorful shipping containers. In the background, several large gantry cranes are visible, along with a smaller ship named 'CROWLEY'. The scene is set during the day under a clear sky.

CURRENT PROJECTS

ZERO EMISSIONS



An aerial photograph of an industrial and rail facility. A large cyan-colored outline highlights the main rail yard area. Four white callout boxes with black text are connected to the facility by white lines. The facility includes numerous white cylindrical storage tanks, a large area with many colorful rail cars, and several tracks. In the background, there are residential buildings and a highway interchange. A body of water is visible on the right side of the image.

5 NEW ARRIVAL AND DEPARTURE TRACKS

93,000 -FEET SUPPORT YARD

RESUPPLY STATION FOR UP TO 30 LOCOMOTIVES

REALIGN & IMPROVE PIER B ST. & PICO AVE.

PIER B ON-DOCK RAIL SUPPORT FACILITY

BRIDGE PROGRAM



SPECIAL PROJECTS



1980
1981
1982
1983
1984
1985
1986
1987
1988
1989
1990



1980

1970

1960

1950

expansion of Pier 3's southeast basin is
Award for Imp
Beach wins the
The 1970
196
195
The 19
The 19

ment and protection of Port Authority
Long Beach and regional marine
provides which meet future demand

ing Long Beach and regional marine
provides which meet future demand

ing Long Beach and regional marine
provides which meet future demand

ing Long Beach and regional marine
provides which meet future demand

ing Long Beach and regional marine
provides which meet future demand

ing Long Beach and regional marine
provides which meet future demand

ing Long Beach and regional marine
provides which meet future demand

ing Long Beach and regional marine
provides which meet future demand

ing Long Beach and regional marine
provides which meet future demand

ing Long Beach and regional marine
provides which meet future demand

ing Long Beach and regional marine
provides which meet future demand

ing Long Beach and regional marine
provides which meet future demand

ing Long Beach and regional marine
provides which meet future demand

ing Long Beach and regional marine
provides which meet future demand

ing Long Beach and regional marine
provides which meet future demand

ing Long Beach and regional marine
provides which meet future demand

ing Long Beach and regional marine
provides which meet future demand

ing Long Beach and regional marine
provides which meet future demand

ing Long Beach and regional marine
provides which meet future demand

ing Long Beach and regional marine
provides which meet future demand

ing Long Beach and regional marine
provides which meet future demand

ing Long Beach and regional marine
provides which meet future demand

ing Long Beach and regional marine
provides which meet future demand

ing Long Beach and regional marine
provides which meet future demand

ing Long Beach and regional marine
provides which meet future demand

ing Long Beach and regional marine
provides which meet future demand

CONTAINER CAFE

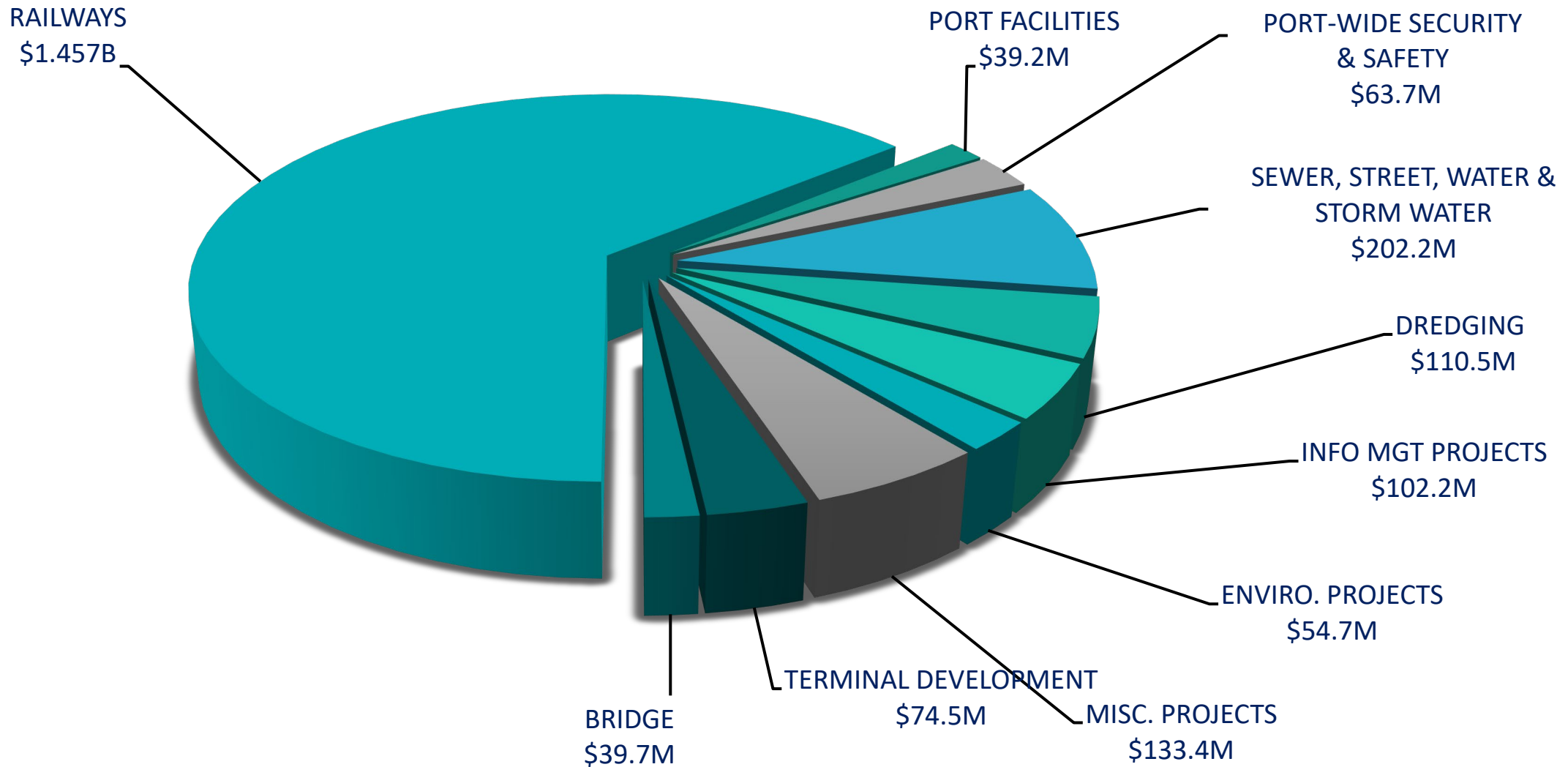
TODAY'S SPECIAL


LOREM IPSUM	12
IPSUM LOREM	8
LOREM IPSUM	12
IPSUM LOREM	12
LOREM IPSUM SPECIAL	8



SPECIAL PROJECTS

10 YEAR CAPITAL PROGRAM FORECAST (FY 2023 – 2032) \$2.278 BILLION



A large blue container ship is docked at a port, with several cranes visible on the left. The ship is heavily loaded with colorful shipping containers. The text "FUTURE PROJECTS" is overlaid in large white letters across the center of the image. The ship's name "COSCO SHIPPING" is visible on its side. In the background, another ship named "CROWLEY" is docked. The scene is set during the day under a clear sky.

FUTURE PROJECTS

DEEP DRAFT NAVIGATION



HARBOR SCENIC DRIVE





Port of
LONG BEACH
THE PORT OF CHOICE

**THE FUTURE
IS HERE!**

PIER WIND

**LARGEST PURPOSE-BUILT OFFSHORE
WIND FACILITY IN THE UNITED STATES**



US GOAL OF 15 GW BY 2035
CA GOAL OF 25 GW BY 2045

POLB STRATEGIC ADVANTAGES



★ State's largest skilled marine, manufacturing, and construction workforce

Center of the U.S. Supply Chain

Big enough to scale up to larger turbines as technology develops

Economically viable for long-term use (no stranded assets)

Aligns with the Tidelands Trust and the California Coastal Act

Industry leader in developing large Marine Infrastructure

We Need Your Help!



Upcoming Contracting Opportunities



BUSINESS OVERVIEW

OPERATIONS DASHBOARD

PORT OPERATIONS & FACILITIES

PORT STATISTICS

FINANCE

INVESTOR RELATIONS

BUSINESS OPPORTUNITIES

FOREIGN TRADE ZONE/FTZ

INCENTIVES

PERMITS

PIERPASS

UPDATE WITH MARIO CORDERO

SUPPLY CHAIN INSIGHT



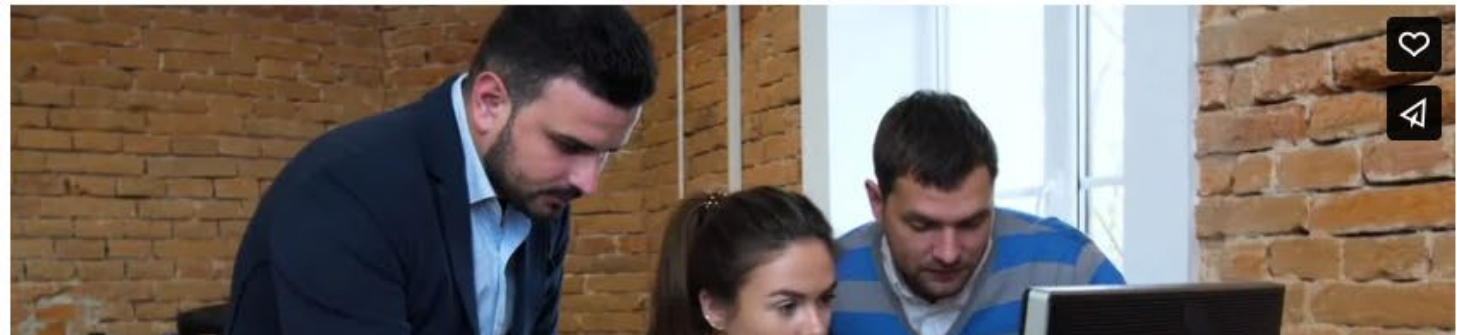
PORT OF LONG BEACH SECURES FUNDING FOR NEW DATA SYSTEM

\$30 million investment in Supply Chain Information High

BUSINESS OPPORTUNITIES OVERVIEW

BUSINESS OPPORTUNITIES OVERVIEW

FUTURE WORK



PER/REG RESOURCES

CONSULTING OPPORTUNITIES TO LOOK OUT FOR



(PROGRAM MANAGEMENT, ENGINEERING DESIGN, MAINTENANCE AND PROJECT CONTROLS)



▶ **PROFESSIONAL ENGINEERING SERVICES FOR PIER F
SHORE POWER INFRASTRUCTURE LONG BEACH, CA**
LIVE - DUE: JULY 24, 2023

▶ **PROFESSIONAL CONSULTING SERVICES FOR ARCHITECTURAL
AND ENGINEERING DESIGN FIELD SUPPORT**
LIVE - DUE : JULY 24, 2023

▶ **ON-CALL PROJECT CONTROLS SERVICES**
RFP/ RSOQ: SUMMER 2023

CONSULTING OPPORTUNITIES TO LOOK OUT FOR



(PROGRAM MANAGEMENT, ENGINEERING DESIGN, MAINTENANCE AND PROJECT CONTROLS)



▶ **HD-S3186 ON-CALL DIVING AND RELATED SERVICES PORT-WIDE LONG BEACH, CA**
LIVE - DUE: JULY 18, 2023

▶ **ON-CALL OIL CONSULTANT SERVICES**
ADVERTISE: FALL/ WINTER 2023

▶ **MAINTENANCE FACILITY – ELECTRIC VEHICLE CHARGING STATIONS**
ADVERTISE: WINTER 2023

▶ **PIER B ON-DOCK RAIL SUPPORT FACILITY PROGRAM LEVEL CONSTRUCTION MANAGEMENT SERVICES**
ADVERTISE: WINTER 2024

CONSULTING OPPORTUNITIES TO LOOK OUT FOR

(CONSTRUCTION MANAGEMENT)



CLEAN TRUCKS PROGRAM ADMINISTRATION SERVICES FOR PORTS OF LONG BEACH AND LOS ANGELES

LIVE - DUE: JUNE 15, 2023

PIER D BERTHS 32-34 QUAY WALL REPAIR

LIVE – DUE: JUNE 20, 2023

ON-CALL SERVICES FOR ASPHALT PAVING, TRAFFIC STRIPING, AND OTHER RELATED SVC

LIVE – DUE: JUNE 27, 2023

PIER B RAILYARD EAST EXPANSION

ADVERTISE: FALL 2023

ON-CALL EMERGENCY WET UTILITY REPAIR

ADVERTISE: FALL 2023

CONSULTING OPPORTUNITIES TO LOOK OUT FOR

(INFORMATION MANAGEMENT, REAL ESTATE AND HUMAN RESOURCES)



▶ **ON-CALL EXECUTIVE SEARCH SERVICES**
LIVE - DUE: JUNE 29, 2023

▶ **ON-CALL PROFESSIONAL COACHING SERVICES**
LIVE - DUE: JUNE 29, 2023

▶ **IMB23-005 CISCO FLEX ENTERPRISE AGREEMENT**
LIVE - DUE: JUNE 14, 2023

▶ **APPRAISAL CONSULTING SERVICE**
LIVE - DUE: JUNE 30, 2023

▶ **VIDEO MANAGEMENT SYSTEM REFRESH**
LIVE - DUE : JULY 5, 2023

▶ **INTRANET REPLACEMENT OR REDESIGN**
ADVERTISE: SUMMER 2023

CONSULTING OPPORTUNITIES TO LOOK OUT FOR (ENVIRONMENTAL AND PORT PLANNING)

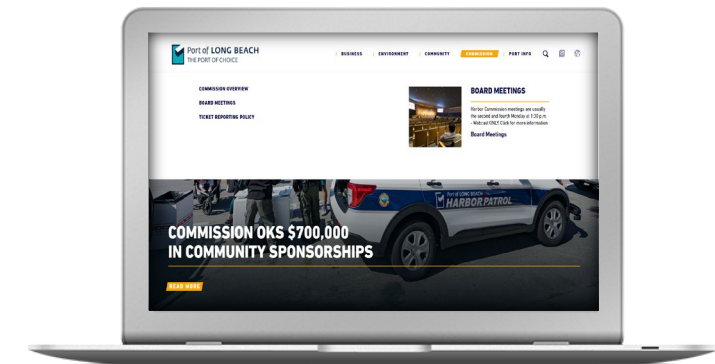


CLEAN HYDROGEN PROGRAMS & PROJECTS

LIVE - DUE: June 30, 2023

ECONOMIC IMPACT STUDY

ADVERTISE: SUMMER/ FALL 2023



Port of Long Beach Vendor Portal



NEW VENDOR REGISTRATION

Create a new vendor record.
If you wish to view or edit an existing vendor,
simply Log In.



BID OPPORTUNITIES

Search and bid electronically on opportunities
with this agency, download documents, and
become a prospective bidder.



LOGIN REQUIRED

MY CONTRACTS

Manage your awarded contracts, record
payments, add subcontractors, produce reports
and charts.



LOGIN REQUIRED

CERTIFIED VENDORS

Find Certified Small Businesses



LOGIN REQUIRED

CONTRACTS

View public information regarding agency
contracts.



MY INSURANCE

View and fulfill insurance requests
requirements.



SBE / VSBE PROGRAM



The Port has 27% Annual Department-wide Goal

SBE/ VSBE UTILIZATION FY 2021

SBE/ VSBE: **34%**

VSBE: **21%**

PROFESSIONAL SERVICE CONTRACTS
(EXCLUDING MAINTENANCE)

SBE/ VSBE: **42%**

VSBE: **13%**

CONSTRUCTION CONTRACTS



DBE Program

Federally funded projects: **DBE goal**

Unified Certification Program

USDOT 49 CFR Part 26





EQUITY IN
INFRASTRUCTURE
PROJECT

- Increase Prime & Subcontracting Opportunities for HUBs
- Provide Access to Capital
- Encourage Joint Venture & Equity Partnership Opportunities
- Streamline Contract Administration, Prompt Payment and Certification Processes to Reduce Barriers to Competition
- Encourage Cross-Agency Collaboration to Widen the Pool of Certified Contractors



