

LINK US PROJECT UPDATE AND UPCOMING OPPORTUNITIES

AMERICAN COUNCIL OF ENGINEERING COMPANIES (ACEC)
APRIL 10, 2024

Tim Lindholm, Deputy Chief Program Management Officer

LINK US – PURPOSE AND NEED



Increased Rail Service and Future Rail Expansion

- Amtrak
- Brightline
- California High Speed Rail
- LOSSAN (Pacific Surfliner)
- Metrolink



Stub-ended tracks



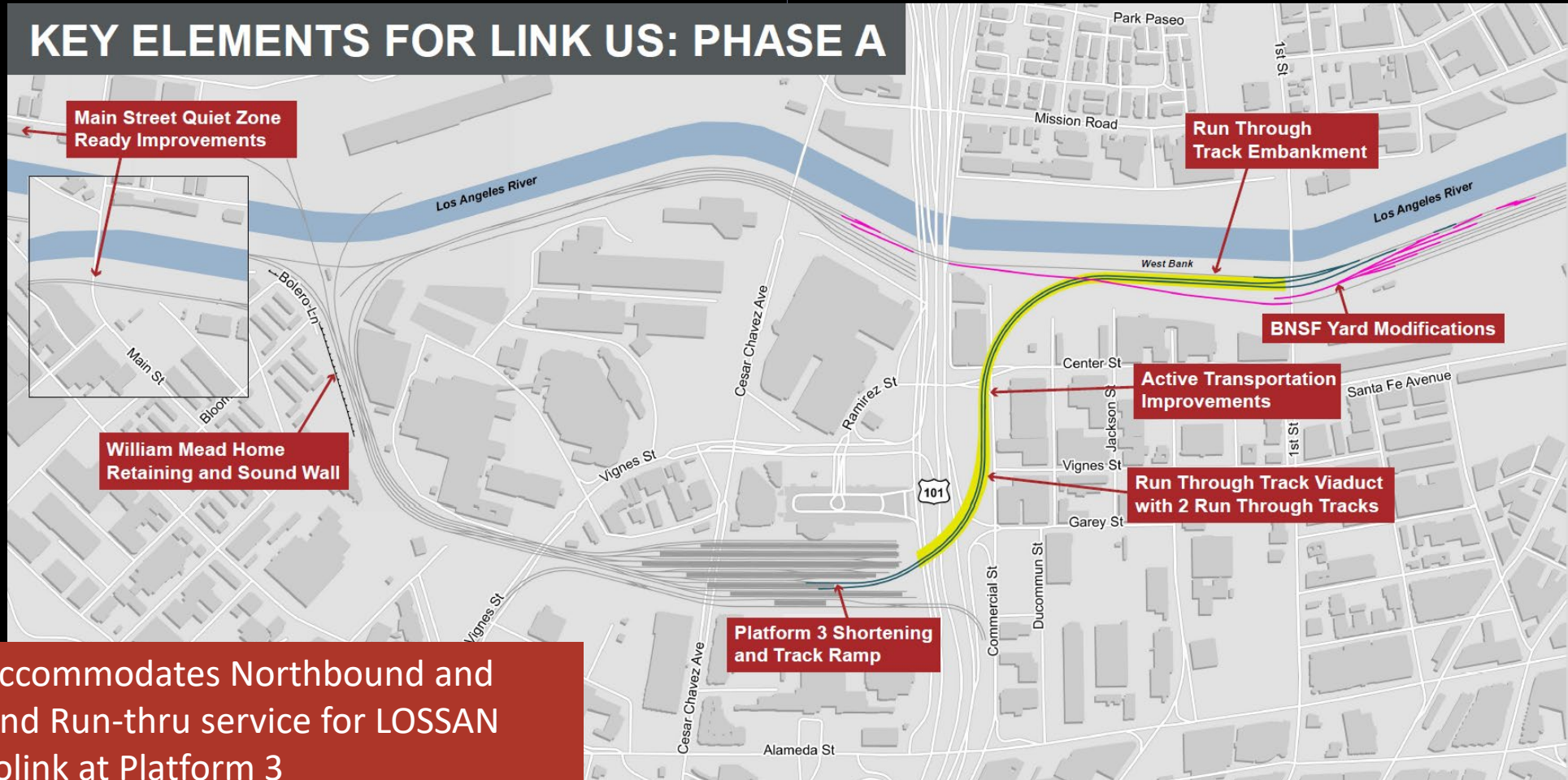
Throat North of Station

Built in 1939 | Union Station is a stub end station and has not been modernized since it was built

LINK US – PHASE A

CMGC Project Delivery

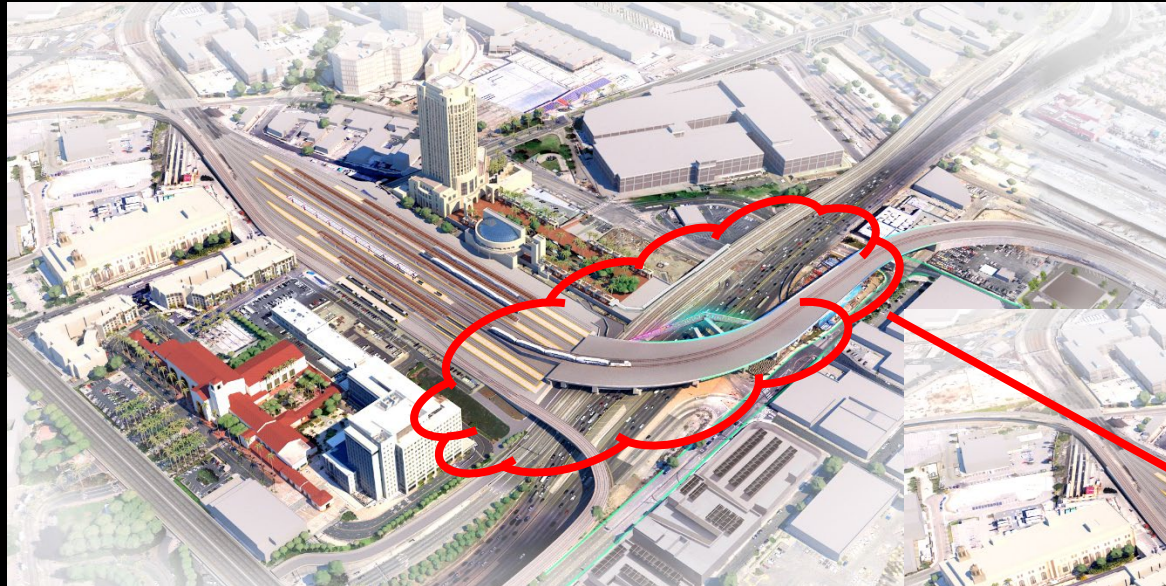
KEY ELEMENTS FOR LINK US: PHASE A



Phase A accommodates Northbound and Southbound Run-thru service for LOSSAN and Metrolink at Platform 3

VALUE ENGINEERING WITH STAKEHOLDERS

REDUCED WIDTH AND ELIMINATED RETAINED FILL SECTIONS



Original Link US Viaduct Rendering

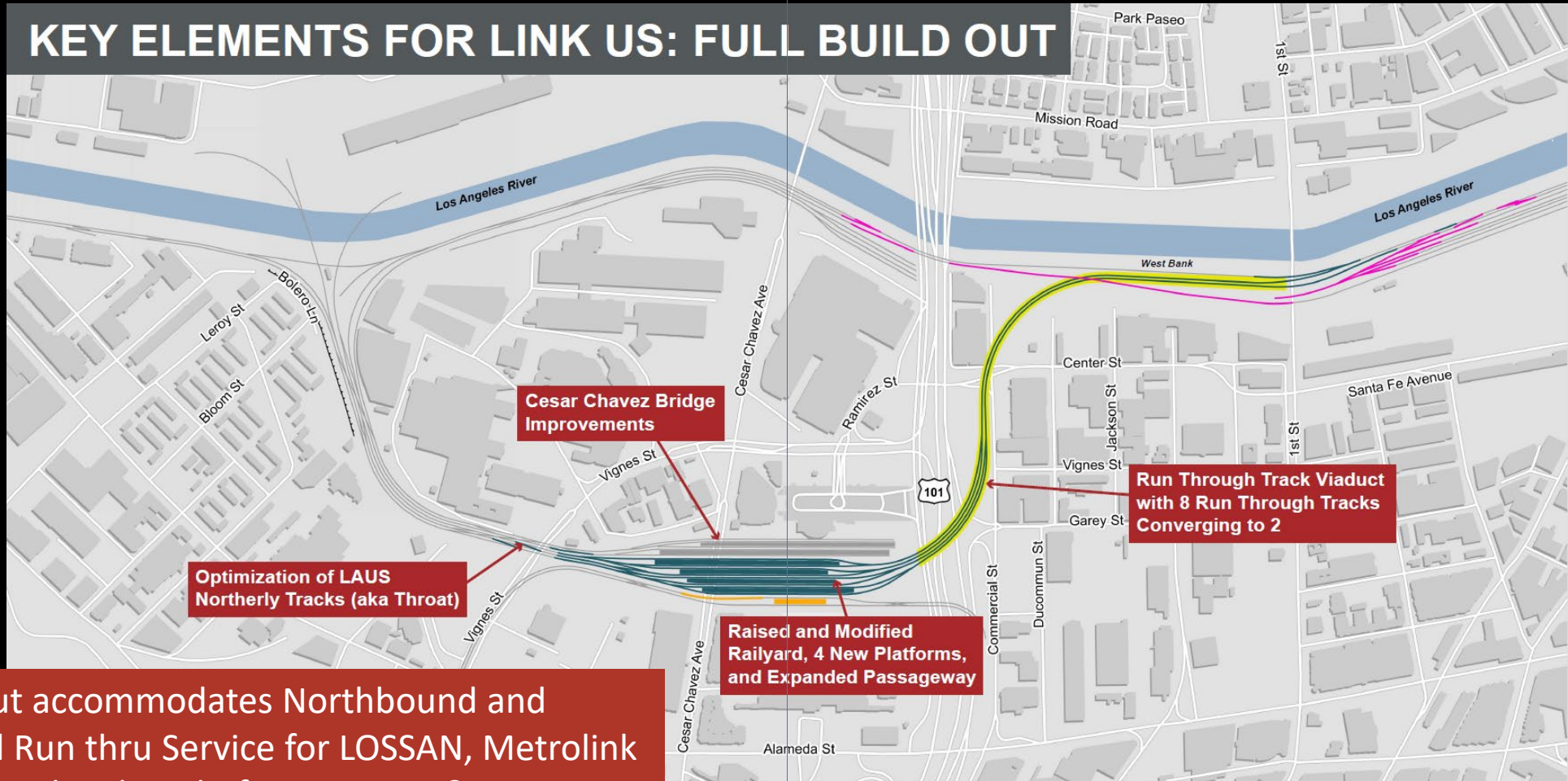


Post VE Link US Viaduct Rendering

LINK US SCOPE – PHASE A AND B

REVISED SCOPE – NOT FUNDED

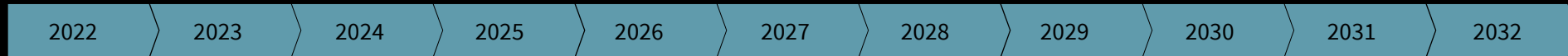
KEY ELEMENTS FOR LINK US: FULL BUILD OUT



Full Build Out accommodates Northbound and Southbound Run thru Service for LOSSAN, Metrolink and High-Speed Rail at Platforms 2, 3, 4 & 5

LINK US - PHASE A

PROGRAM SCHEDULE – CMGC PROJECT DELIVERY



May 2022 Metro Board Authorizes Staff to Proceed with Preconstruction Phase

Spring 2022 – Fall 2024
Advanced Preliminary
Engineering

2024 thru 2025
Utility Relocations

❖ **Fall 2024** EIS/NEPA Approval

❖ **Fall 2024** CMGC Award

Fall 2024 thru 2026
Final Design

Spring 2025
Early CMGC Construction

Summer 2026 thru Summer 2031
Main Construction

LINK US – PHASE A

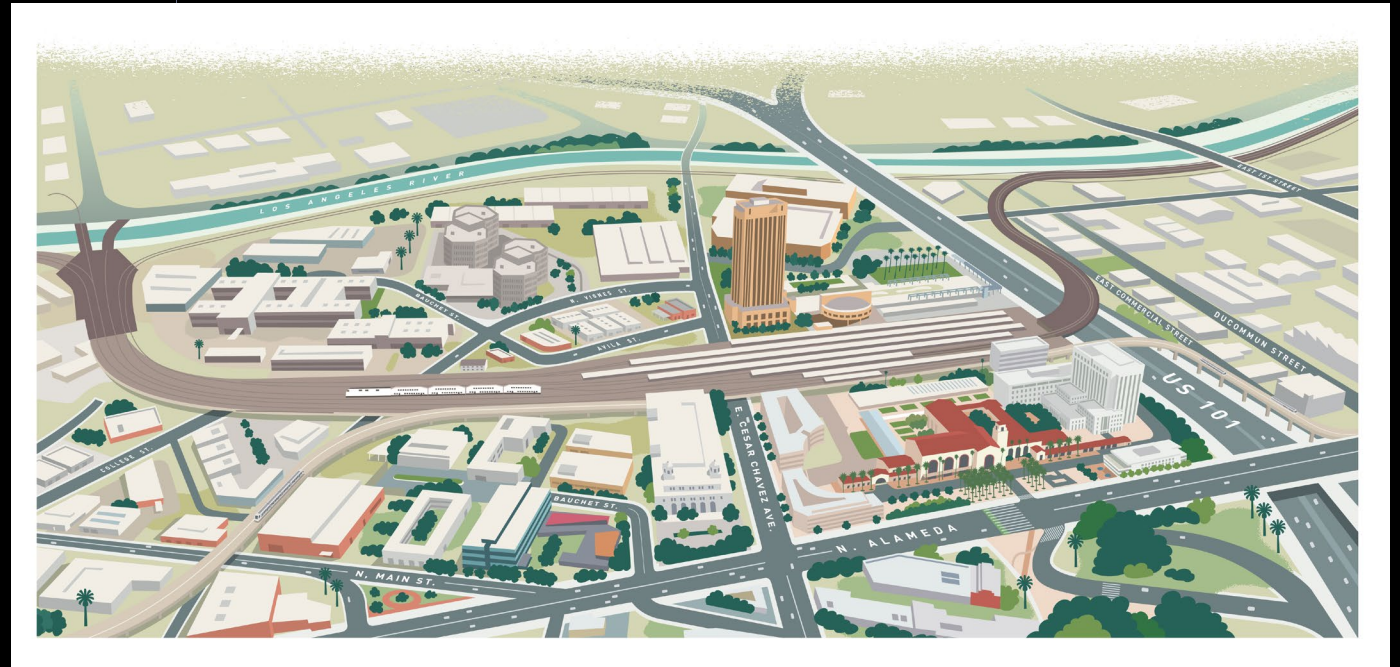
UPCOMING PROCUREMENTS

Construction Manager General Contractor (CMGC)

- RFP Release – Spring 2024
- RFP Award – Fall 2024

Construction Management Support Services (CMSS)

- RFP Release – Summer 2024
- RFP Award – Summer 2025



LINK US – PHASE A

CMGC - SCOPE OF SERVICES NEEDED

PHASE 1 – PRECONSTRUCTION

- Scheduling
- Estimating
- Constructability
- Value Engineering

PHASE 2 – CONSTRUCTION OF RAIL, STATION & VIADUCT

- New run-through track structure that spans over the US-101 freeway, Center Street and the Amtrak lead track;
- New embankment structures North of First Street bridge;
- Renovated Platform 3 at LAUS with run-through track service to the mainline tracks on the west bank of the Los Angeles River
- New sound walls and retaining walls in the northern section of the Project near William Mead Homes;
- “Quiet Zone Ready” improvements at North Main Street grade crossing on the west bank of the Los Angeles River;
- Commercial Street active transportation improvements; and
- Completion of associated Utility Relocations.

SOUTHEAST GATEWAY LINE

Upcoming Procurement - Advanced Works CM/GC

- Utility Adjustments
- Hazardous Soils Abatement
- Grade Crossings
- Freight Relocation
- UPPR Bridge Demolition and Construction
- LRT Bridge over I-105
- C-Line Infill Station and Trackwork
- Release of Request for Proposals Spring 2024

LRT Core Scope - Project delivery method under evaluation

EASTSIDE PHASE 2

Project Overview

- 4.6 miles:
 - 3 miles underground
 - 0.5 miles aerial
 - 1.1 mile at-grade
- 3 new stations and 1 relocated station:
 - 1 open- underground station
 - 2 underground stations
 - 1 at-grade station
- Maintenance and Storage Facility (MSF)
- Serving communities of unincorporated LA County, Commerce, and Montebello
- \$7.9 billion (2031\$)



EASTSIDE PHASE 2

Next Steps

- Complete CEQA – Spring 2024
- Start NEPA – Spring/Summer 2024
- Issue RFP for Project Management Support Services – Spring/Summer 2024
- Target Early Works Construction contract RFP – 2025
- Determine Delivery Method for full LRT Construction Contract

C (K) LINE EXTENSION TO TORRANCE

Project Overview

- This project will operate as part of the Metro K Line and provide a direct ride between Torrance and the Metro E Line, with connections to two new regional bus centers in Redondo Beach and Torrance.
- The project is funded by the Measure M and R sales tax measures approved by L.A. County voters in 2008 and 2016, respectively, with \$891 Million.



C (K) LINE EXTENSION TO TORRANCE

- **Construction Management and Program Management Support Services (CMSS/PMSS)**

- Services required in advance of construction to assist Metro with preparation of alternative delivery procurement plans and documents
- CMSS/PMSS Request for Proposals planned to be initiated in Quarter 3, CY2024, pending Metro Board selection of a preferred alignment alternative

- **Construction Package 1 - Advanced Utility Relocations (AUR) and Freight Track Relocations**

- Major Contract includes significant utility relocations, grading, retaining walls, freight track reconstructions, grade crossing improvements, etc.
- Alternative Delivery – Progressive Design Build
- Release of Request for Proposals planned for Q3, CY 2025

ZEB CHARGING INFRASTRUCTURE

Project Overview

- Conversion of Metro's 10 operating divisions from compressed natural gas (CNG) to zero-emission bus (ZEB) technologies
- Approximately 2,200 directly operated and 156 contractor-operated buses



ZEB CHARGING INFRASTRUCTURE

Upcoming Procurements

- RFP for Program Implementation Support Services Contract to support Charging Infrastructure Design & Construction
- RFP for Progressive Design Build for Charging Infrastructure at Div 18 and 7